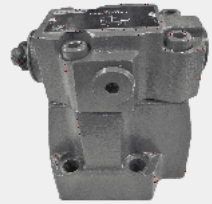




3.13

DR...L5X 型

(NG) 10 32
350 bar
400L/min



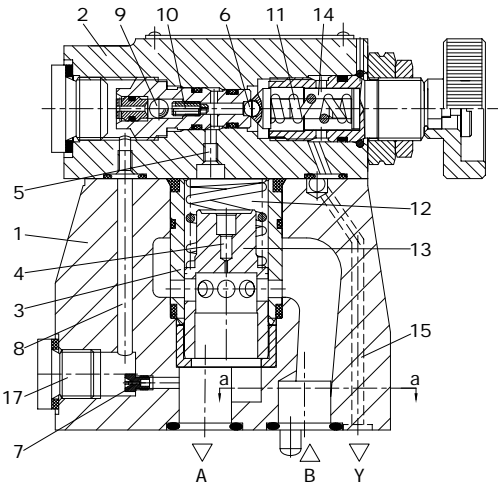
目录

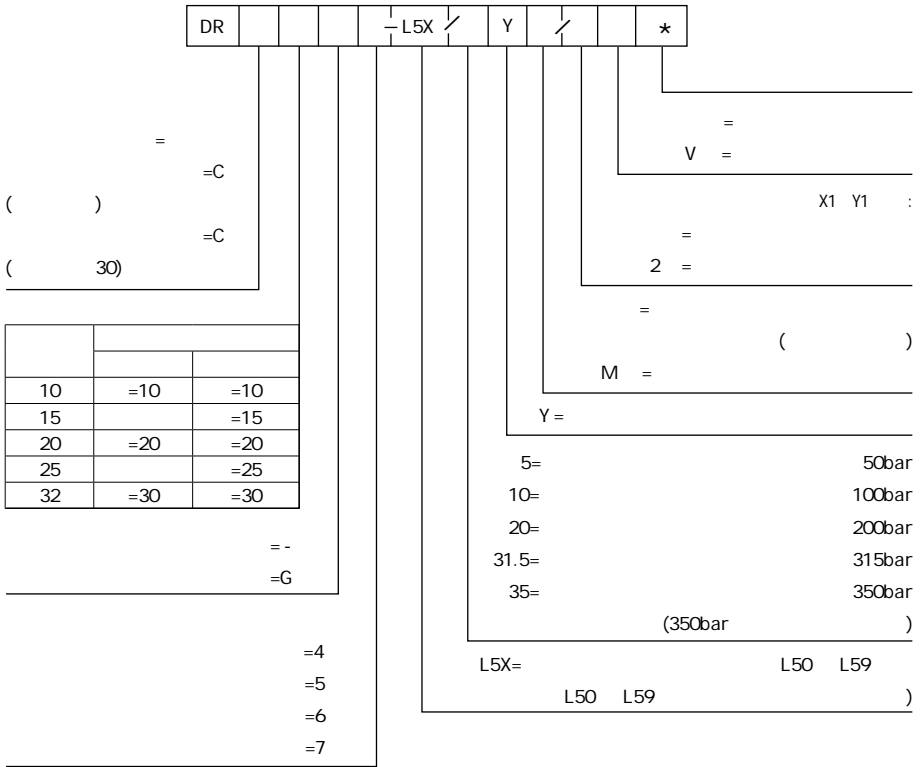
02 -
02 -
03 -
04 -
05 -5
06-08 -4

特点

DIN24340D ISO5781

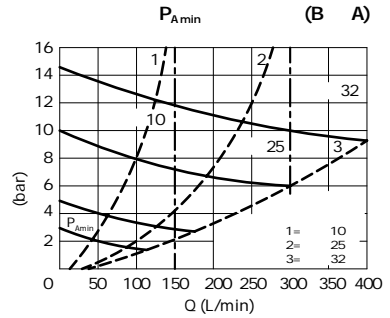
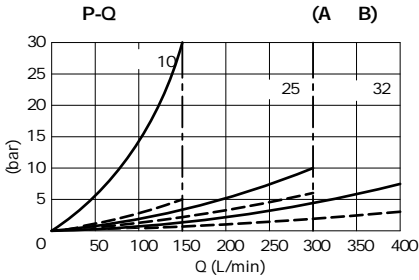
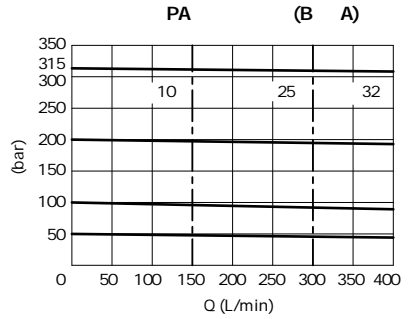
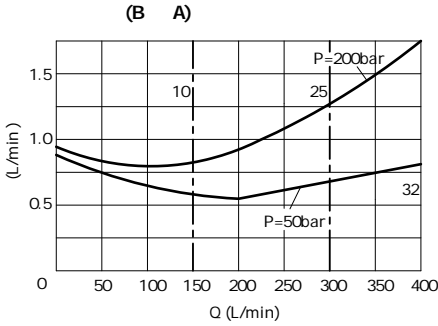
()



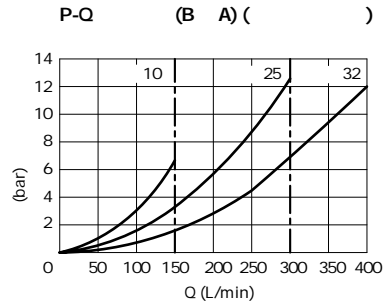


		-					
		-					
		-30 +80 ()					
		-20 +80 ()					
mm ² /s		10 800					
			NAS1638 9		ISO4406 20/18/15		
	B	bar	350				
	A	bar	10 350				
	Y	bar	350() ; 315()				
		bar	50;100;200;315;350				
		bar	()				
			DR10	DR15	DR20	DR25	DR30
		L/min	150	-	300	-	400
		L/min	150	300	300	400	400
			Optional				
			DR10	DR15	DR20	DR25	DR30
	DR	kg	3.6	-	5.3	-	8.2
	DR...G	kg	5.3	5.5	5.1	5.0	5.0
	DRC	kg	1.2				
	DRC30	kg	1.5				

HLP46 $\varnothing = 40 \pm 5$



—
- - -



3
1.0

