



3.21

DA/DAW...L5X 型

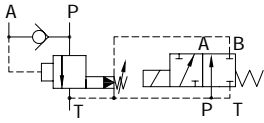
(NG) 10 32
315 bar
240L/min



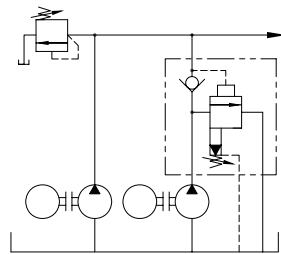
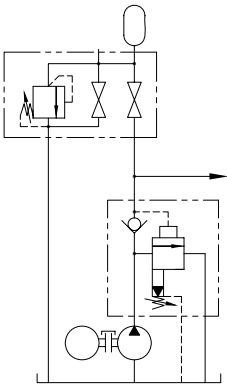
目录

特点

02	-		
03	-	DIN24340D	ISO 5781
03	-		
04	- 4		
05	- 2		
06	.		
07-09	.		
10	-		

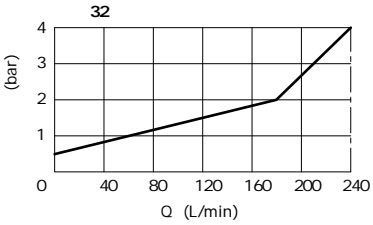
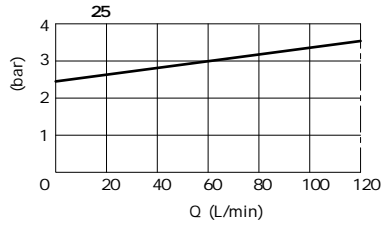
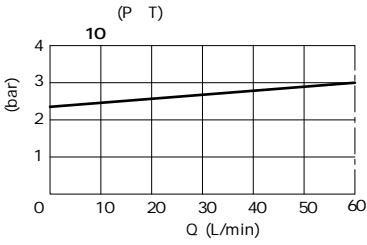


03

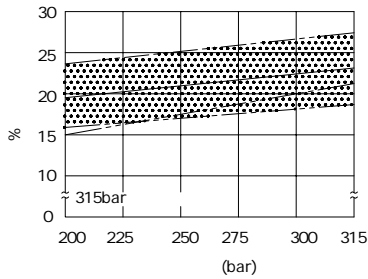
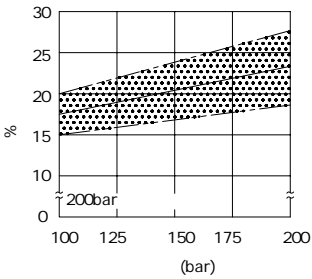
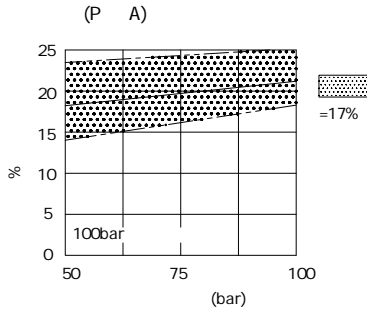
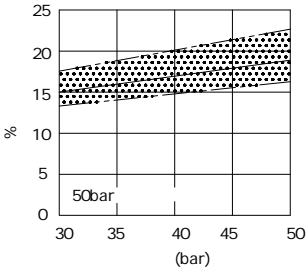


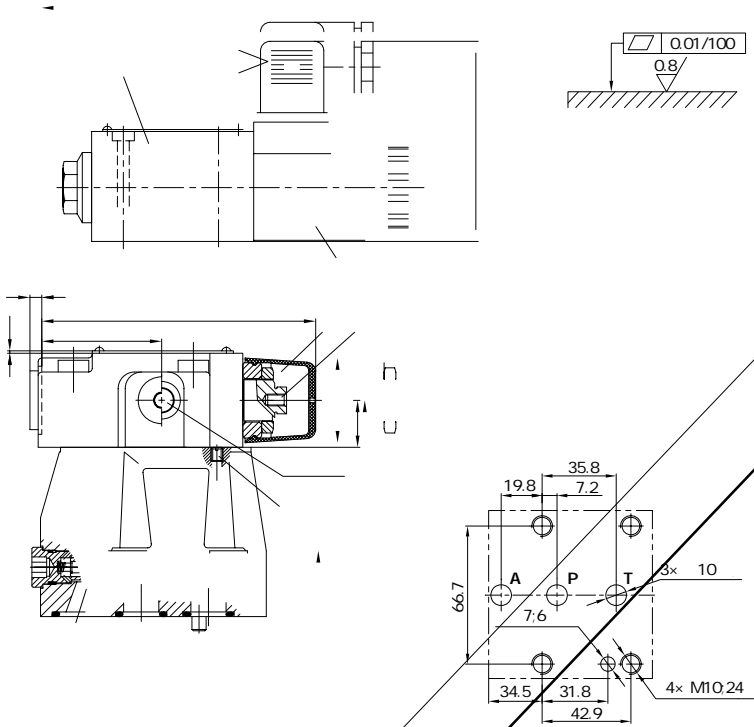
		-			
		-			
		-30 +80 ()			
		-20 +80 ()			
mm ² /s		10 800			
		NAS1638 9 ISO4406 20/18/15			
A	bar	315			
		bar 50, 100, 200, 315			
		10	25	32	
	L/min	60	120	240	
		WE6	3WE6A9,	3WE6B9	
		10	25	32	
	DA	kg 3.8	7.9	12.3	
	DAW	kg 5.3	9.4	13.8	
	DAC	kg	1.2	DAWC	1.5Kg
	DAC30	kg	1.5	DAWC30	1.5Kg

HLP46 =40 ± 5



T





03

