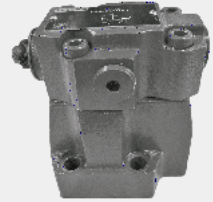




3.12

### DR...L5X 型

(NG) 10 32  
350 bar  
400L/min



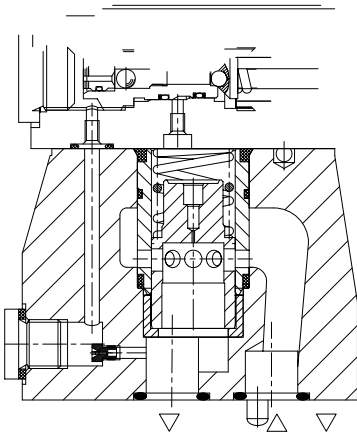
### 目录

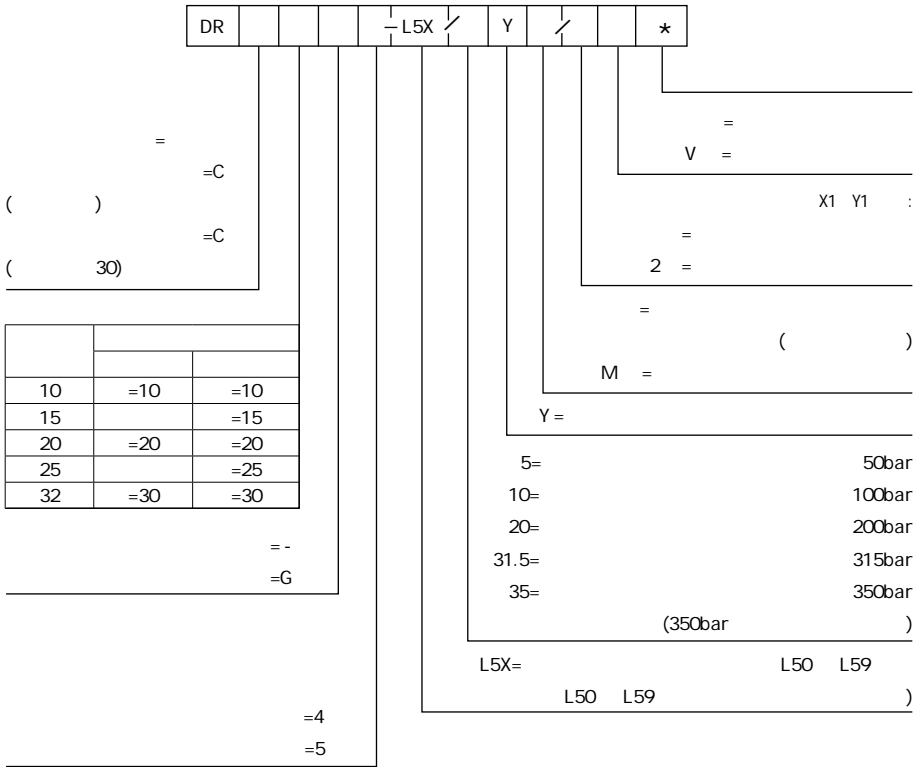
02	-
02	-
03	-
04	-
05	-5
06-08	-2
	.
	.
	-

### 特点

DIN24340D ISO5781

( )



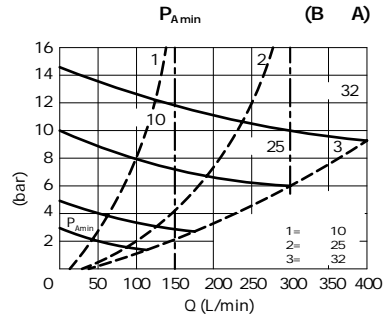
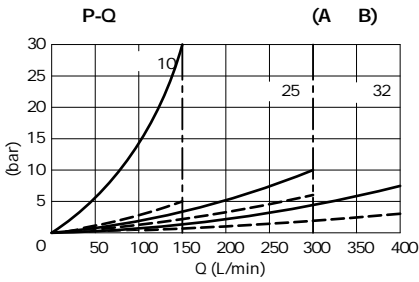
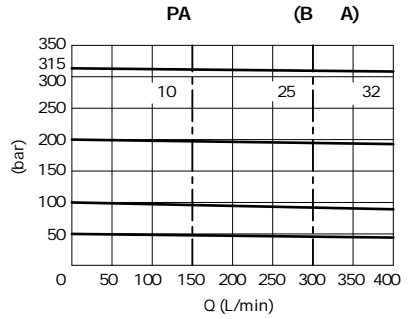
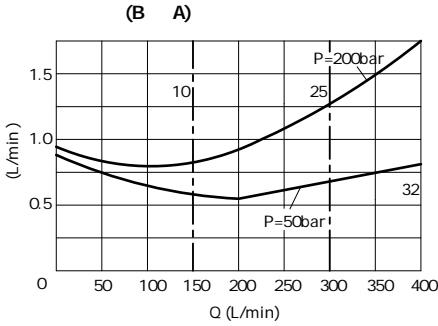


03

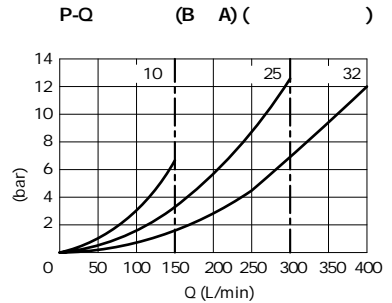



03

HLP46      =40 ± 5



—  
- - -



03

8  
 4 (DR10 DR20)  
 6 (DR30)  
 9 X1  
 (G1/4 M14x 1.5)  
 10

	B1	B2	B3	B4	B5	O ( A,B)				O ( X,Y)			D
DR10	85	50	66.7	58.8	7.9	17.12x 2.62				9.25x 1.78			13
DR20	102	59.5	79.4	73	6.4	28.17x 3.53				9.25x 1.78			22
DR30	120	76	96.8	92.8	3.8	34.52x 3.53				9.25x 1.78			30
	L1	L2	L3	L4	L5	L6	L7	L8	L9	L10	H1	H2	H3
DR10	96	35.5	33	42.9	21.5	-	7.2	21.5	31.8	35.8	112	92	28
DR20	116	37.5	35.4	60.3	39.7	-	11.1	20.6	44.5	49.2	122	102	38
DR30	145	33	29.8	84.2	59.5	42.1	16.7	24.6	62.7	67.5	130	110	46



