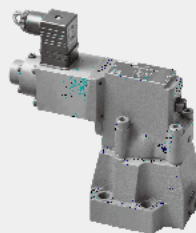




6.5

DRE(E)/DREM(E)...30

10 25 32
315 bar
300L/min



02	-		
03	-	DIN24340D	ISO 5781
03	-		
04	- 4		
05	-	()	
05-06	-	VT-2000	()
07			
08-09			

DRE/DREM

(2) (1) (4) (3) (5)

DRE10

A (2) (4)

B A A (6) (7) (8) (4)

(10) (10) A (2)

(10) Y (4) A

A (2) A (4)

(9) Y (5) A B

DRE20 DRE30

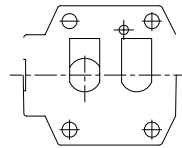
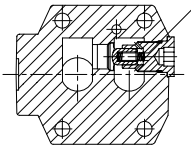
DRE10 (9) B

(11) (1) A (12) Q=0 A

DREM

(13)

06

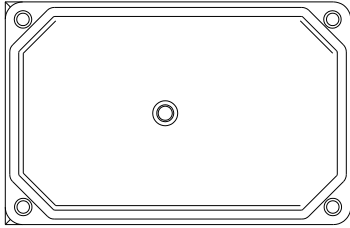


		-	
		-	
		-30	+80
		-20	+80
		mm ² /s	2.8 380
		NAS16389 ISO4406 20/18/15	
		A B bar	315
		Y	
		A bar	50, 100, 200, 315
		A	Q
A		= ()	
()		50 bar	10-60 ⁺²⁰ bar
()		100 bar	10-120 ⁺²⁰ bar
()		200 bar	10-220 ⁺²⁰ bar
()		315 bar	10-340 ⁺²⁰ bar
		=50 bar	60-80 bar
		=100 bar	120-140 bar
		=200 bar	220-240 bar
		=315 bar	340-360 bar
		10	25 32
		L/min	80 200 300
()		L/min	0.7 2
		f 3.5%	
		<f 2%	
		f 2.5% Pmax	
		f 4.5% Pmax	
		100 300ms ()	

		mA	100
		mA	800
		19.5 20	28.8
		+50	
		DIN EN 175301-803/ISO 4400	
DIN40050		IP 65	
		VT2000	

()

· /



P1 -
P2 -
P3 -
P4 -
St1-
LED- U_B

· DRE(M)E-30 ()

DIN EN 175201-804

06

		A1	F1
	A	24 VDC(U(t)=21V 31V)	
	B	GND	
	C	1	
	D	f 10V Re>50K	4 20mA Re>100
	E		
	F	1	

¹ C F



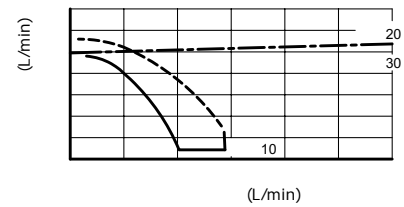
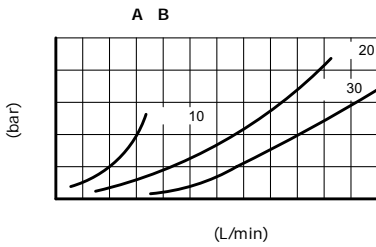
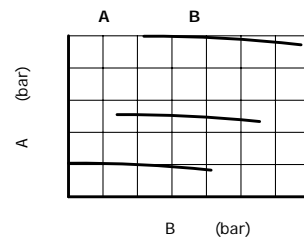
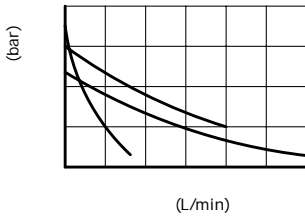
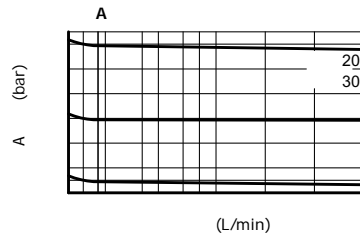
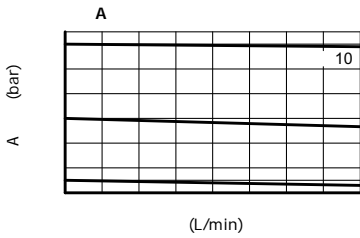
. /

≡

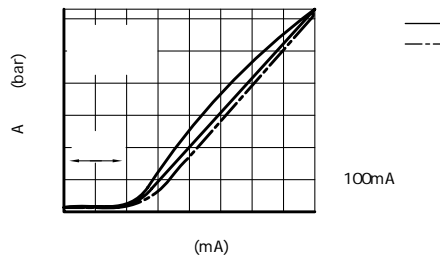
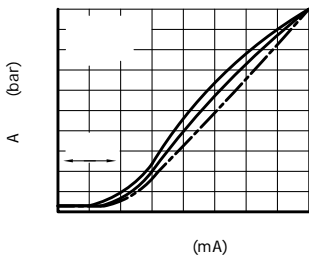
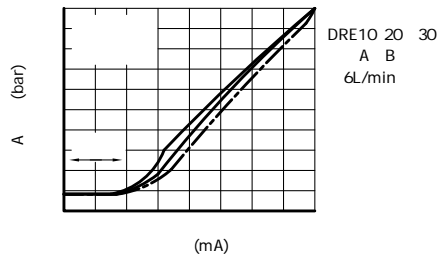
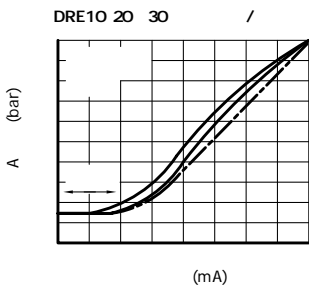


0...+10V
4...20mA

(HLP46 =40 f 5)

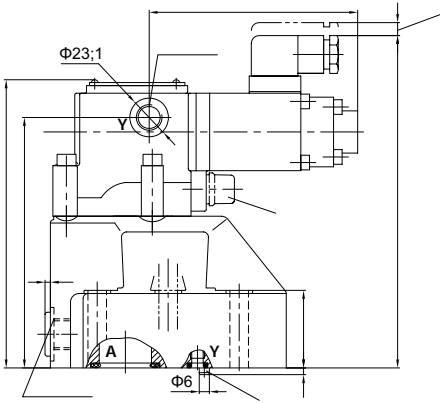


--- =20bar P DRE10
 — =100bar P DRE10
 - - - =20bar 100bar P DRE20/30

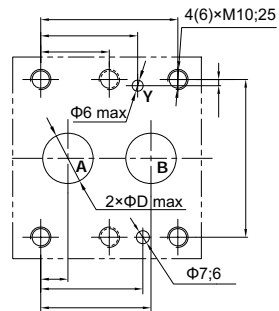
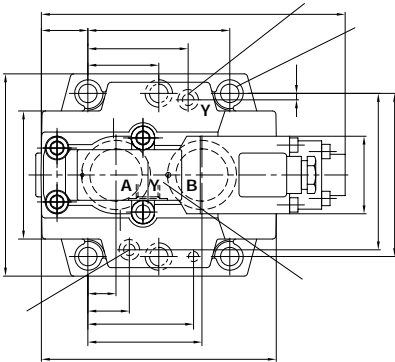


06

(mm)



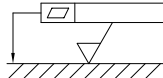
- 1
- 2
- 3 ()
- 4 X DRE10
DRE20 DRE30
- 5
- 6
- 7
- 8
- 9
- 4 (DRE10 DRE20)
- 6 (DRE30)



GB/T70.1-10.9

DRE10 M10° 50; DRE20 M10° 60

DRE30 M10° 70 $M_h=75Nm$



	B1	B2	B3	B4	B5	O	(A B)			O	(X Y)			D	H4
10	85	50	66.7	58.8	7.9		17.12°	2.62		9.25°	1.78		13	188	
25	102	59.5	79.4	73	6.4		28.17°	3.53		9.25°	1.78		22	198	
32	120	76	96.8	92.8	3.8		34.52°	3.53		9.25°	1.78		30	206	
	L1	L2	L3	L4	L5	L6	L7	L8	L9	L10	H1	H2	H3		
10	181	35.5	96	42.9	21.5	-	7.2	21.5	31.8	35.8	152	136.5	28	5.2kg	
25	177	33.5	112	60.3	39.7	-	11.1	20.6	44.5	49.2	162	146.5	38	6.3kg	
32	176.5	28	140	84.2	59.5	42.1	16.7	24.6	62.7	67.5	170	154.5	46	8.6kg	

+86 400 101 8889

+01 630 995 3674

+49 172 3683463

+81 03 6809 1696



©