

SV SL

01

(4) (1) (2) (3)

SV ... ()

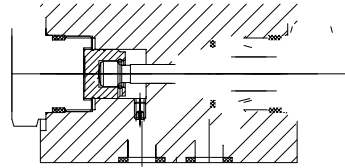
A B (2)

X (4)

(2) B A

()

Y



SL ... ()

SV

Y (4)

A A (4)

A3(7) ,A SV

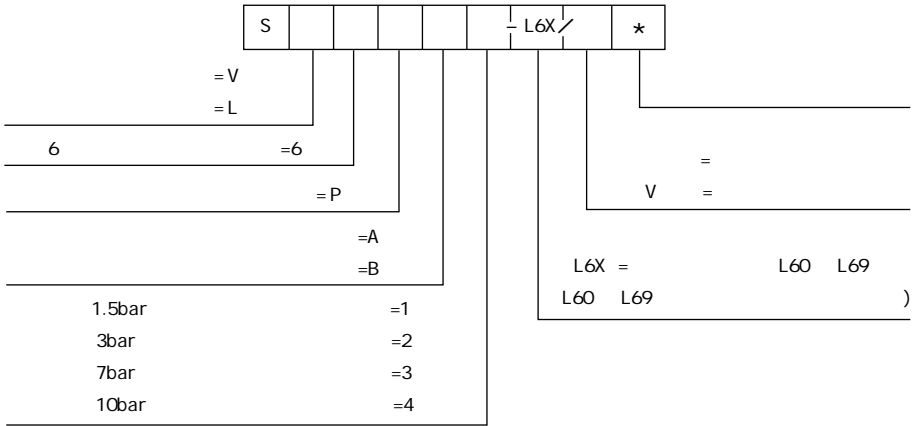
A

- | | | |
|---|---|----|
| 1 | 5 | A1 |
| 2 | 6 | A2 |
| 3 | 7 | A3 |
| 4 | | |

SV6PB.-L6X/...

SL6PB.-L6X/...

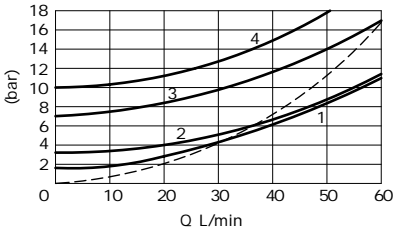
()



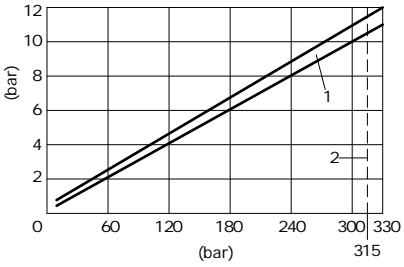
01

	kg	0.8
		A B , B A
	bar	315
	bar	5 315
- X	cm ³	0.68
- Y(SL)	cm ³	0.58
- A1	cm ²	0.42
- A2	cm ²	1.33
- A3	cm ²	0.19
	mm ² /s	2.8 500
		-30 +80
		-20 +80
		-
		-
		NAS1638 9 ISO4406 20/18/15

(HLP46 =40 ± 5)



— =A B
1 1.5bar
2 3bar
3 7bar
4 10bar
- - - =B A



1
2

+86 400 101 8889	+01 630 995 3674
+49 172 3683463	+81 03 6809 1696



©



1.8

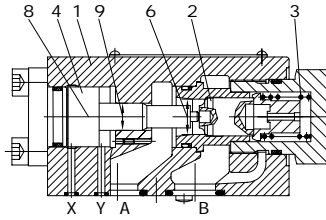
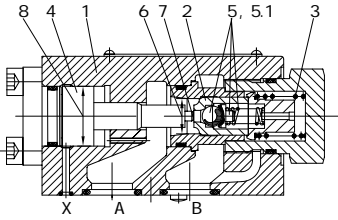
SV/SL...L4X

(NG)10 32
315bar
550L/min



		02	-		
		02	DIN24340D	ISO5781	
		03	-		
		03	-		
		04	-		
		05-07	-		
.		05			
.		06-07			
30	SV/SL	07			

01



- 6 A1
- 7 A2
- 8 A3
- 9 A4

SV SL

SV...A... SL...A... ()

1

X

(1)

(2)

(3)

(5.1)

(2)

B

(4)

(5)

A

SV ... ()

A B

(2) SL ... () 2

SV

(4)

X

(4)

A

Y

A

(2)

B A

(4)

A4(9)

(4)

A

SV

A



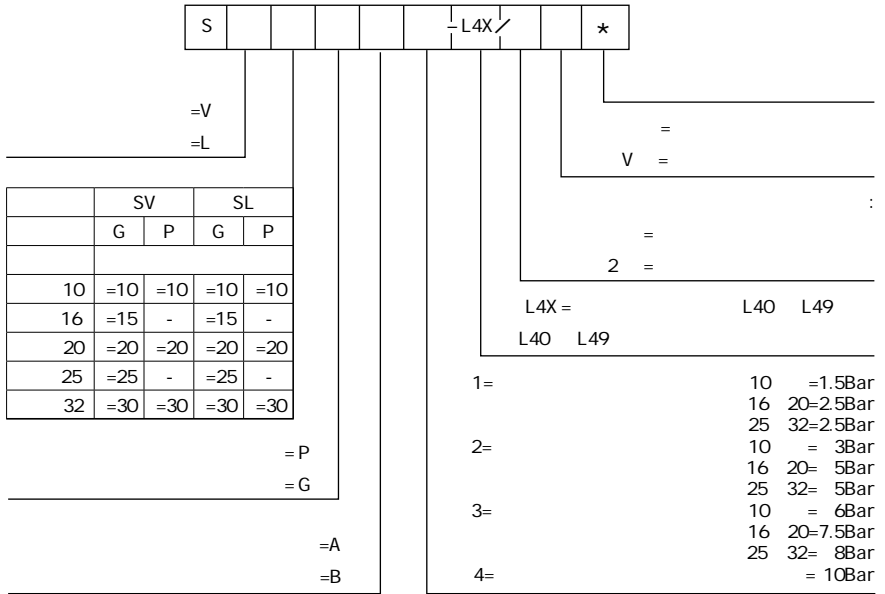
SV

SV..PA.-L4X/... (,)



SL

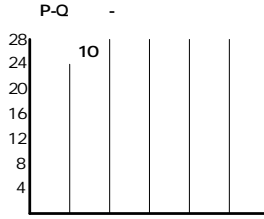
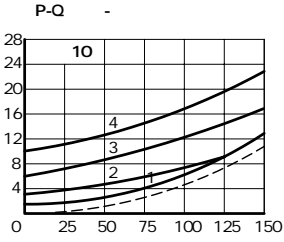
SL..PB.-L4X/... (,)



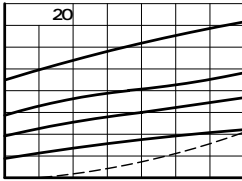
		10	16	20	25	32	
	kg	2.1		4.7		7.8	
	kg	2.5	5.7	5.7	10	10	
		A	B		B	A	
bar		315					
bar		5	315				
-	X	cm ³	2.5	10.8	10.8	19.27	19.27
-	Y(SL)	cm ³	2	9.6	9.6	17.5	17.5
-	A1	cm ²	1.33	3.46	3.46	5.72	5.72
-	A2	cm ²	0.33	0.7	0.7	1.33	1.33
-	A3	cm ²	3.8	10.17	10.17	16.61	16.61
-	A4	cm ²	0.79	1.13	1.13	1.54	1.54
		mm ² /s	10	800			
			-30	+80			
			-20	+80			
			-				
			-				
			NAS16389 ISO4406 20/18/15				

(HLP46 =40 ± 5)

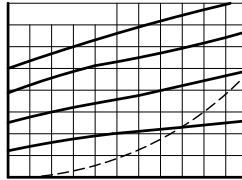
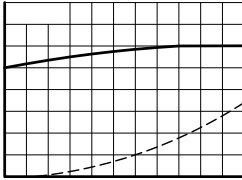
01



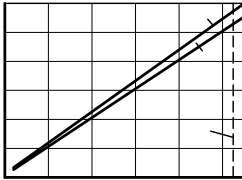
- A B
- 1 1.5bar
- 2 3bar
- 3 6bar
- 4 10bar
-
- B A



- A B
- 1 2.5bar
- 2 5bar
- 3 7.5bar
- 4 10bar
-
- B A

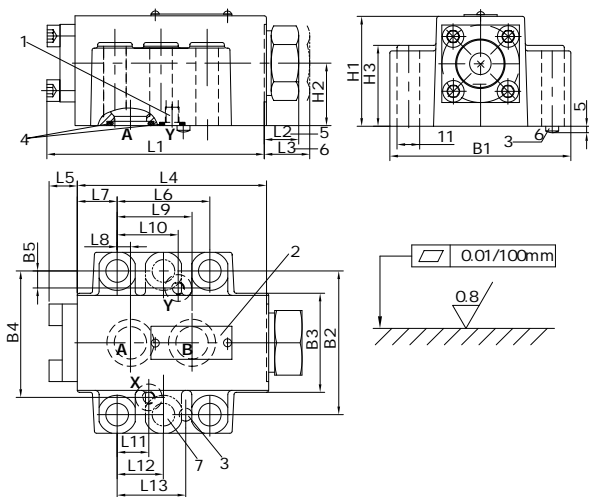


- A B
- 1 2.5bar
- 2 5bar
- 3 7.5bar
- 4 10bar
-
- B A



- 1
- 2
- 3
- 4

(mm)

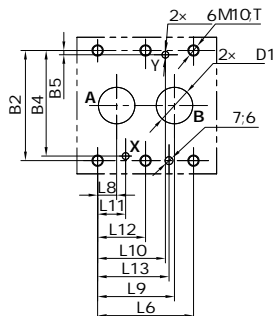


- 1 Y " SL"
- (" SV")
- 2
- 3
- 4 0
- 10
- A B 17.12x 2.62
- X Y 10x 2.5
- 20
- A B 24x 3
- X Y 10x 2.5
- 32
- A B 34x 3
- X Y 10x 2.5
- 5 " 1" " 2"
- (L2)
- 6 " 3" " 4"
- (L3)
- 7 SV/SL30 6

- 10 : 4-M10x 50GB/T 70.1-10.9
M_k=75Nm
- 20 : 4-M10x 70GB/T 70.1-10.9
M_k=75Nm
- 30 : 6-M10x 85GB/T 70.1-10.9
M_k=75Nm

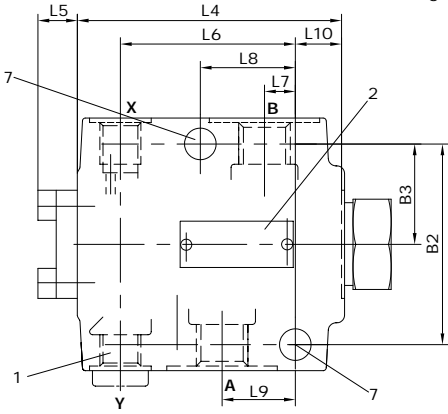
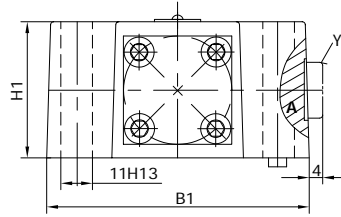
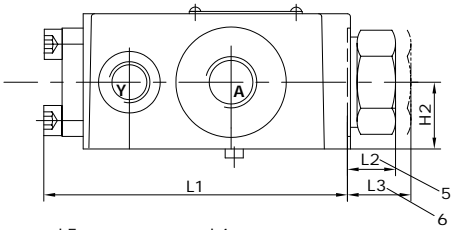
- 10 G460/01(G3/8) G460/02(M18x 1.5)
G461/01(G1/2) G461/02(M22x 1.5)
- 20 G412/01(G3/4) G412/02(M27x 2)
G413/01(G1) G413/02(M33x 2)
- 30 G414/01(G11/4) G414/02(M42x 2)
G415/01(G11/2) G415/02(M48x 2)

		L1	L2	L3	L4	L5	L6	L7	L8	L9	L10
SV	10	100.8	15.5	15.5	87.8	13	42.9	18.5	7.2	35.8	-
	20	135	17.7	47.7	117	18	60.3	27.5	11.1	49.2	-
	32	156.1	36.1	46.1	134	22.1	84.2	39	16.7	67.5	-
SL	10	100.8	15.5	15.5	87.8	13	42.9	18.5	7.2	35.8	21.5
	20	135	17.7	47.7	117	18	60.3	27.5	11.1	49.2	39.7
	32	156.1	36.1	46.1	134	22.1	84.2	39	16.7	67.5	59.5



		L11	L12	L13	B1	B2	B3	B4	B5	H1	H2	H3	D1	T
SV	10	21.5	-	31.8	84	66.7	46	58.8	-	51	29	36	13	23
	20	20.6	-	44.5	100	79.4	63.5	73	-	70	37	55	22	24
	32	24.6	42.1	62.7	118	96.8	75	92.8	-	85	42.5	69	32	25
SL	10	21.5	-	31.8	84	66.7	46	58.8	7.9	51	29	36	13	23
	20	20.6	-	44.5	100	79.4	63.5	73	6.4	70	37	55	22	24
	32	24.6	42.1	62.7	118	96.8	75	92.8	3.8	85	42.5	69	30	25

01



- 1 Y " SL" (" SV")
- 2
- 5 " 1" " 2" (L2)
- 6 " 3" " 4" (L3)
- 7 2

:
 L4X 30
 30 L4X
 !

30

		A, B		X, Y
SV	10	G1/2	M22× 1.5	G1/4 M14× 1.5
	16	G3/4	M27× 2	
	20	G1	M33× 2	
	25	G11/4	M42× 2	
	32	G11/2	M48× 2	
SL	10	G1/2	è /3	M14× 1.5

M14× 1.5

+86 400 101 8889	+01 630 995 3674
+49 172 3683463	+81 03 6809 1696



©