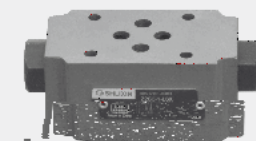




1.10

Z2S 6...L6X

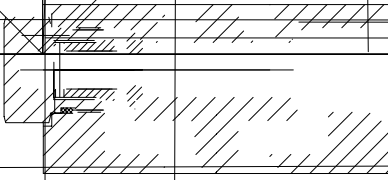
(NG) 6
315 bar
60L/min



02
02
03
03
04
04

-
- DIN 24340A
- ISO 4401 CETOP-RP121H
-
-
-

01



- 1
- 2
- 3 A1
- 4 A2

Z2S6
 B1 B2
 B1

A1 A2

(1)

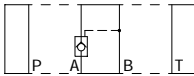
(2)

A1 A2

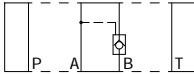
B2

(= , =)

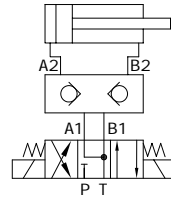
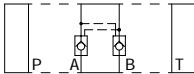
: Z2S6A-L6X/..



: Z2S6B-L6X/..



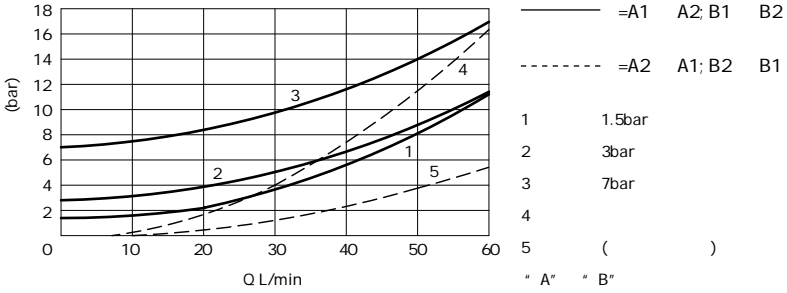
: Z2S6-L6X/..



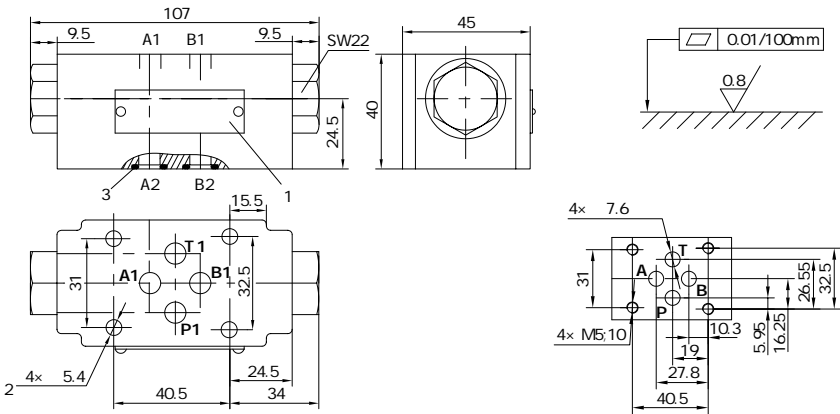
01

	-
	-
	NAS1638 9 ISO4406 20/18/15
	-30 +80
	-20 +80
mm ² /s	2.8 500
bar	315
L/min	60
bar	
	A1/A2=1/3
kg	1.0

(HLP46 =40 ± 5)



(mm)



:

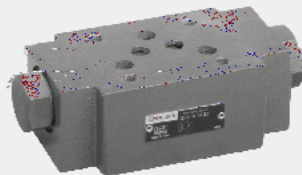
- | | | | | |
|----------------|--------------------|---|--------------|-------------|
| G341/01(G1/4), | G341/02 (M14× 1.5) | 1 | | |
| G342/01(G3/8), | G342/02(M18× 1.5) | 2 | | |
| G502/01(G1/2), | G502/02(M22× 1.5) | 3 | 0 9.25× 1.78 | A2 B2 P2 T2 |



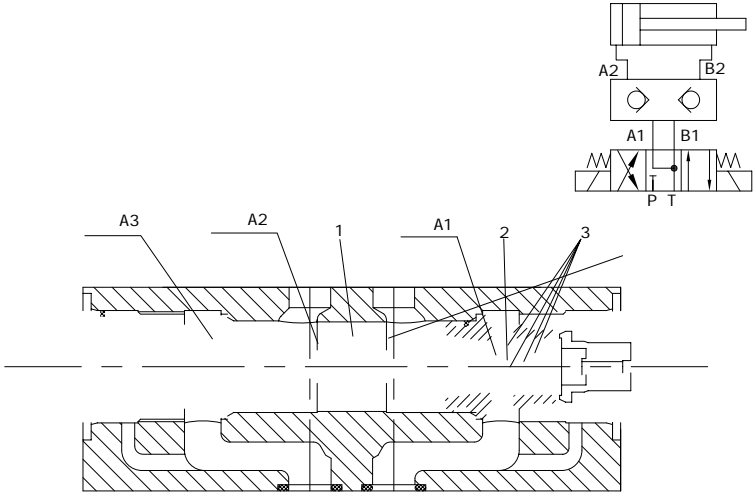
1.11

Z2S 10...L3X

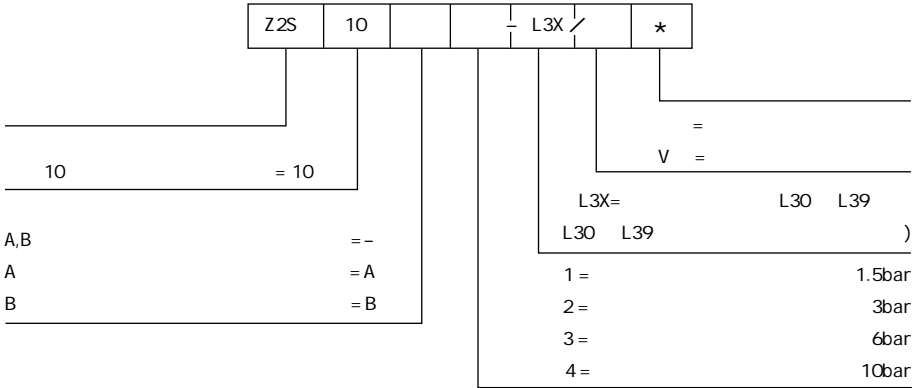
(NG)10
315bar
120L/min



02	-	DIN 24340
02	-	
03	-	
03	- 4	
03		
04		

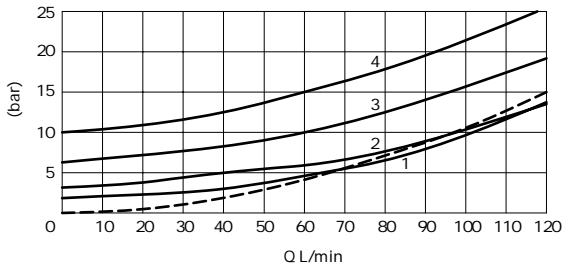


01

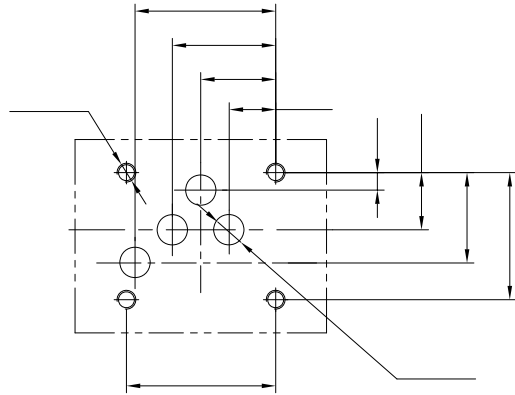
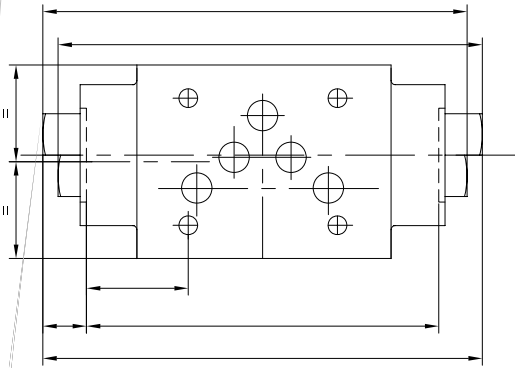
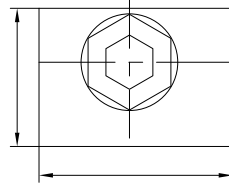
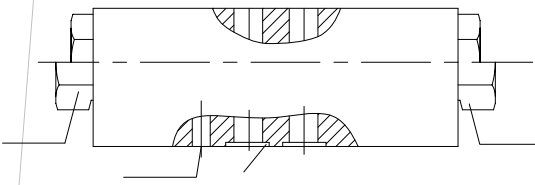


	-
	-
	NAS1638 9 ISO4406 20/18/15
	-30 +80
	-20 +80
mm ² /s	2.8 500
bar	315
L/min	120
() bar	1.5 3 6 10
	A1/A2=1/13.4 A3/A2=1/2.68(" O2/O4")
kg	3

(HLP46 =40 ± 5)



— A → A1; B → B1
 - - A1 → A; B1 → B
 1 1.5bar
 2 3bar
 3 6bar
 4 10bar





1.12

Z2S 16...L5X

(NG)16
315 bar
300L/min

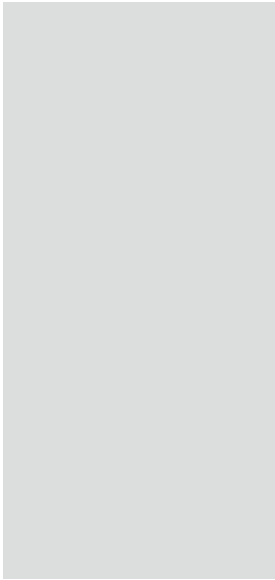


02
02
03
03
03
04

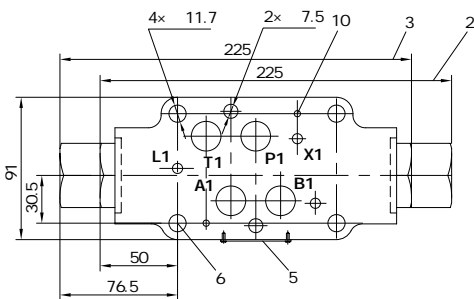
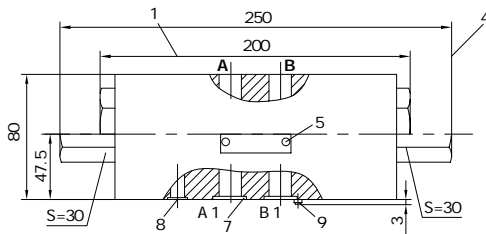
-
-
-
- 4

DIN 24340

01

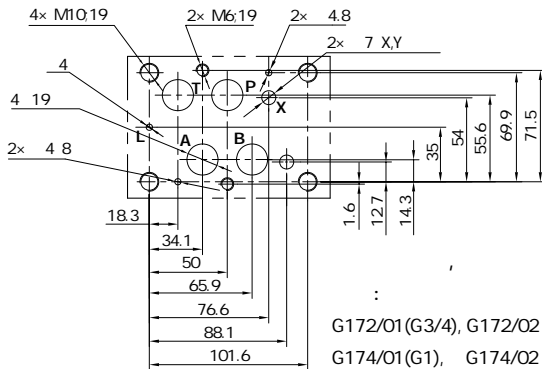
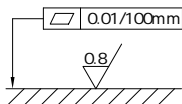


(mm)



1	1	2	A / B
2	3	4	B
3	3	4	A
4	3	4	A B
5			
6			
7	Ø 22x	2.5(A, B, P, T)
8	Ø 10x	2(X, Y, L)
9			
10			

GB/T70.1-2000 4x M10
 $M_k=75Nm$
 GB/T70.1-2000 2x M6
 $M_k=15.5Nm$



G172/01(G3/4), G172/02 (M27x 2)
 G174/01(G1), G174/02 (M33x 2)



1.13

Z2S 22...L5X

(NG) 22
315bar
450L/min

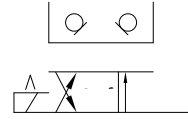


02
02
03
03
03
04

-
-
-
- 4

DIN 24340

01



Z 2S 22 .L5X/...

1

2

3

(= , =)123A2B2A1B1PTA1B1A2B230† † 1 ... 5050.. 0.. Of Of Of O

