

WEH 10 16 25 32

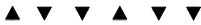
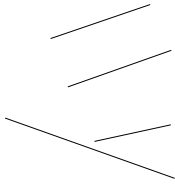
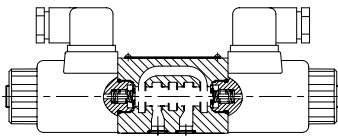
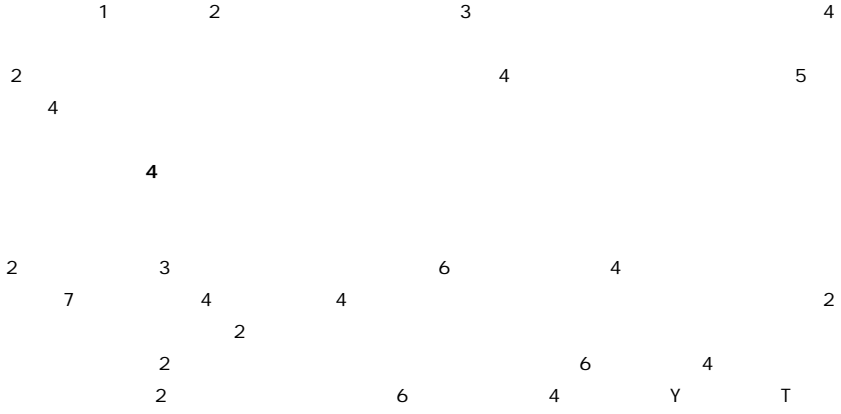
(NG)10 32
350bar
1100L/min

WEH

DIN2430 ISO4401

250 bar

WEH



- 1-
- 2-
- 3-
- 4-
- 5-
- 6-
- 7-
- 8-

1 WEH.../.....

2 WEH...H.../...

3 WEH...H.../O...

4 WEH...H.../OF...

2 3 4

P

P

1 WEH10

(1)		P	M6	(2)
	M6			(2)
(2)		(1)	M6	(2)
	M6			(2)

2 WEH16

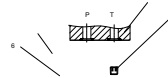
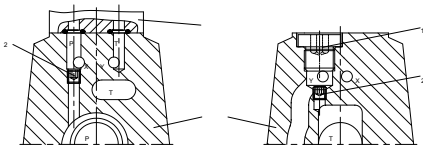
(1)		P		10
	M6		M6	9
(2)		T		10
	M6		M6	9

3 WEH25

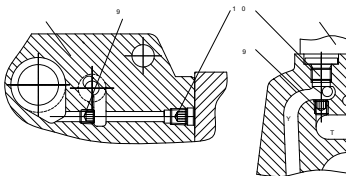
(1)		P	M12	
				6
(2)		T	M6	6

4 WEH32

(1)		P	M6	9
(2)		T	M6	9

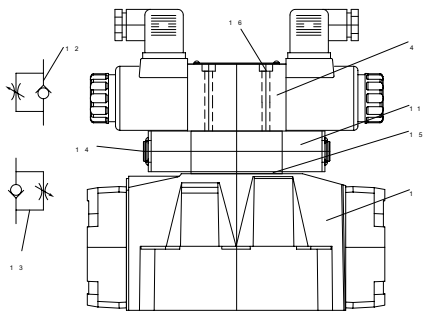


WEH 25



WEH 16

180°

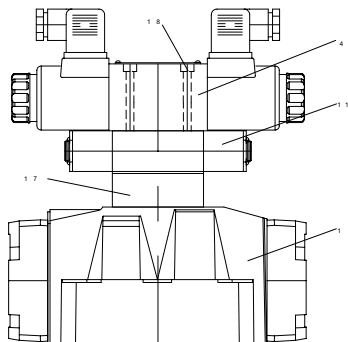


WEH.....S S 2

- 1 -
- 4 -
- 11 - Z2FS6)
- 12 -
- 13 -
- 14 - SW6
- 15 -
- 16 - M5× L GB/T70.1-10.9
- L
- 8.9Nm

250bar
40bar
P0.45
3bar

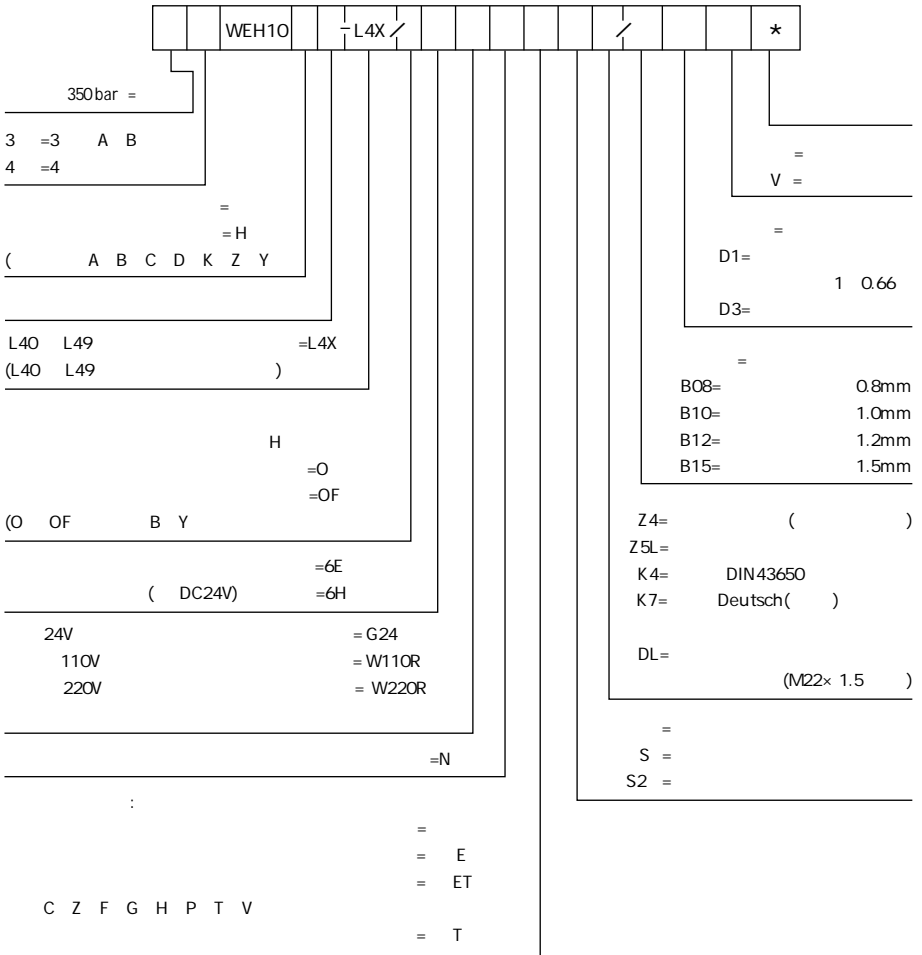
D1) 1 0.66 D3
1/0.66=1.515



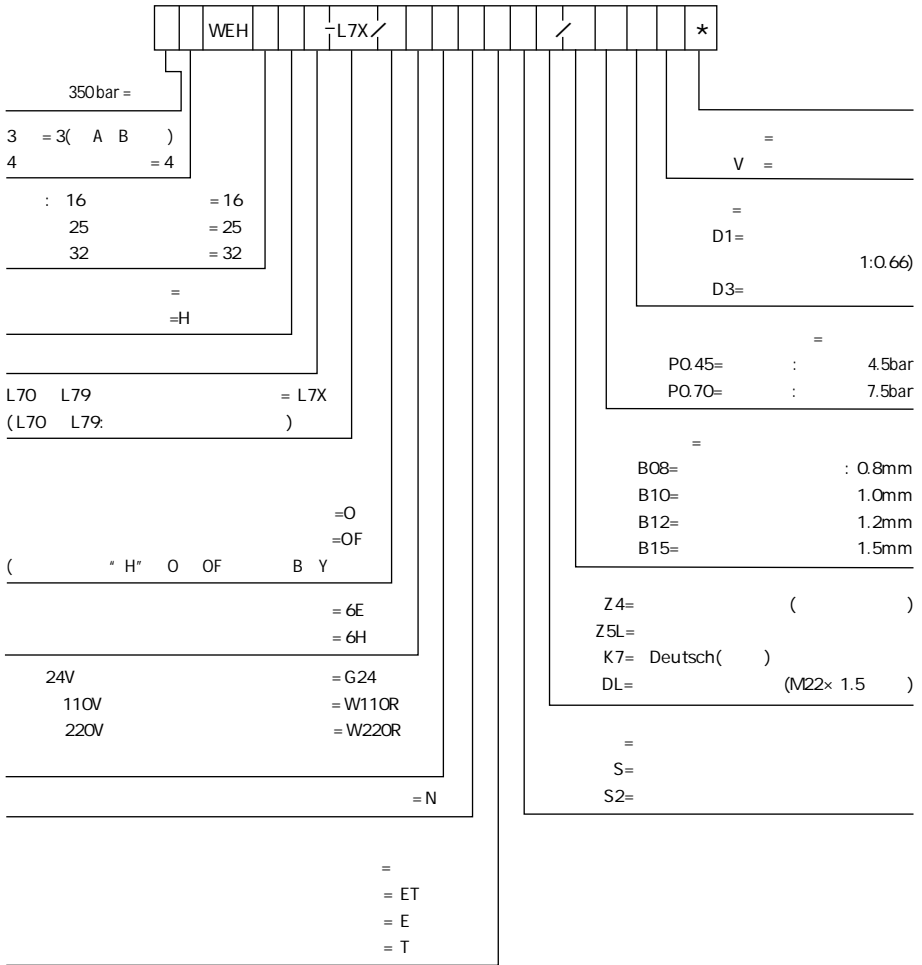
D 3

WEH.../...S...D1 D 3

- 1 -
- 4 -
- 11 -
- 17 -
- 18 - M5× L GB/T70.1-10.9

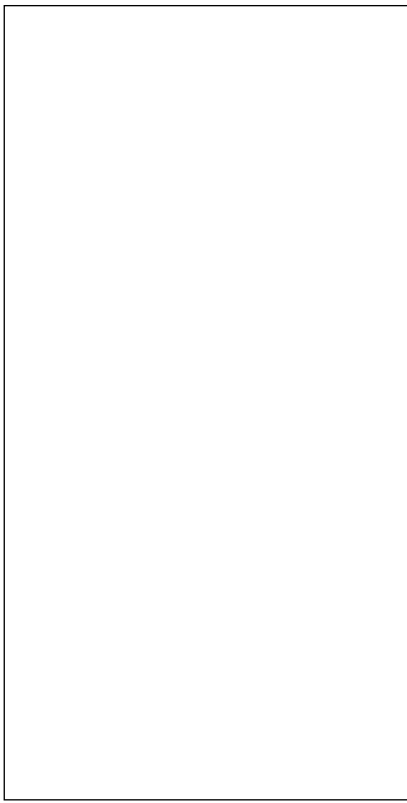
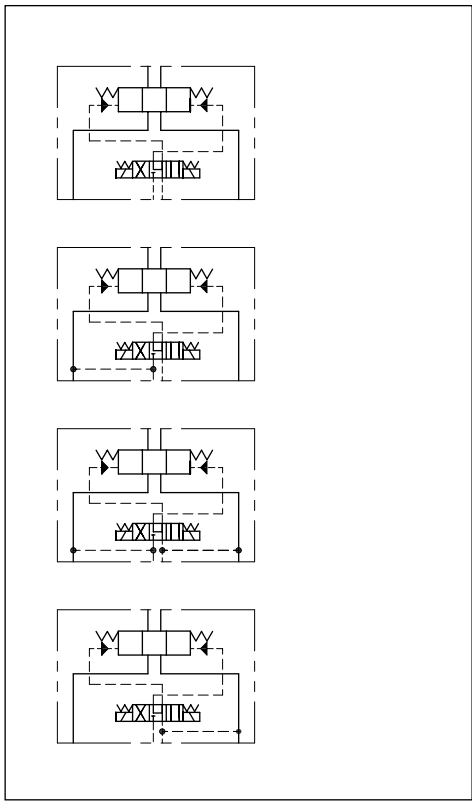


- :
 1. WEH10 C Z F G H P T V (Y)
 2. T 250bar



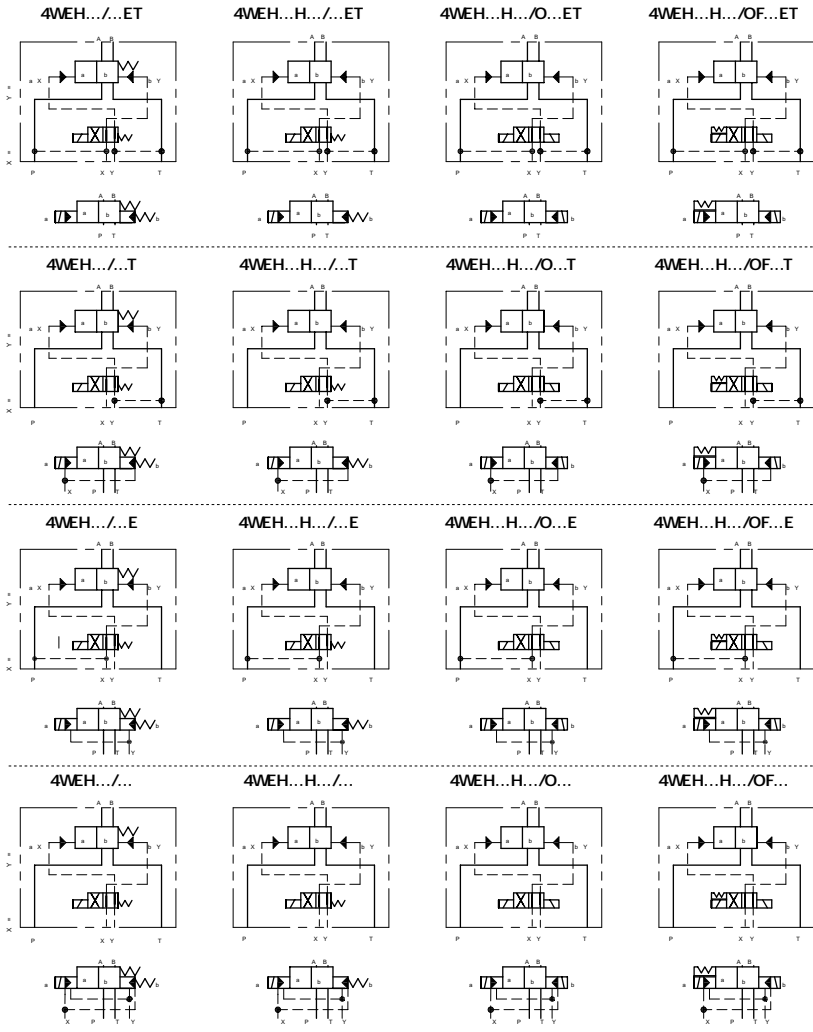
1. WEH16 32 C Z F G H P T V
T (Y)

2. 250bar



4WEH...E.../...	E		
4WEH...F.../...	F		
4WEH...G.../...	G		
4WEH...H.../...	H		
4WEH...J.../...	J		
4WEH...L.../...	L		
4WEH...M.../...	M		
4WEH...P.../...	P		
4WEH...Q.../...	Q		
4WEH...R.../...	R		
4WEH...S.../...	S		
4WEH...T.../...	T		
4WEH...U.../...	U		
4WEH...V.../...	V		
4WEH...W.../...	W		
4WEH...M1.../...	M1		
4WEH...M2.../...	M2		
4WEH...J2.../...	J2		

	A	B
4WEH...EA.../...		4WEH...EB.../...
4WEH...FA.../...		4WEH...FB.../...
4WEH...GA.../...		4WEH...GB.../...
4WEH...HA.../...		4WEH...HB.../...
4WEH...JA.../...		4WEH...JB.../...
4WEH...LA.../...		4WEH...LB.../...
4WEH...MA.../...		4WEH...MB.../...
4WEH...PA.../...		4WEH...PB.../...
4WEH...QA.../...		4WEH...QB.../...
4WEH...RA.../...		4WEH...RB.../...
4WEH...SA.../...		4WEH...SB.../...
4WEH...TA.../...		4WEH...TB.../...
4WEH...UA.../...		4WEH...UB.../...
4WEH...VA.../...		4WEH...VB.../...
4WEH...WA.../...		4WEH...WB.../...
4WEH...M1A.../...		4WEH...M1B.../...
4WEH...M2A.../...		4WEH...M2B.../...
4WEH...J2A.../...		4WEH...J2B.../...



:	A	C	D DE	K	Z	B	Y YE
:							
:							

1.

1). WEH10

P A B		bar	WEH10							
			350							
T		bar	315							
		bar	210	160						
Y		bar	210	160						
(C Z F G H P T V)		bar	10							
		bar	10							
		bar	7							
(C Z F G H P T V)		bar	6.5							
		bar	250							
			-30 +80()							
			-20 +80()							
		mm ² /s	2.8	500						
		cm ³	2.04							
			4.08							
		bar	70		140		210		250	
		ms	30	65	25	60	20	55	15	50
		ms	35	80	30	75	25	70	20	65
		ms	30							
		ms	35	40	30	35	25	30	20	25
		L/min	35							
			HC HD HK HZ HY							
			6.7							
		kg	7.1							
			1.0							
			0.5							

- 1.
- 3).

1.

4). WEH32

		:P A B bar	WEH32...					
			350					
T		bar	250					
		bar	210	160				
Y (bar)		bar	210	160				
		bar	8.5 10 5					
		bar	C Z F G H P T V 4.5					
		bar	250					
			-30 80()					
			-20 80()					
		mm ² /s	2.8	500				
-		cm ³	29.4					
-		cm ³	58.8					
* " O"								
		bar	50		150		250	
-		ms	65	80	50	90	35	105
-		ms	100	130	75	100	60	115
* " O"								
-		ms	(50 60)					
-		ms	115	90	35	70	65	65
			C D K Z Y					
		L/min	50					
		kg	36					

*

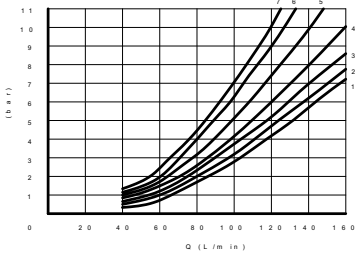
2

(± 10%)	12 24 28 1) 48 96 110 205 220		110 127 220
W	30	16	
VA			50
VA			220
	+50		
	+150		
DIN40050	IP65		

1)

(HLP46 $\varnothing = 40 \pm 5$)

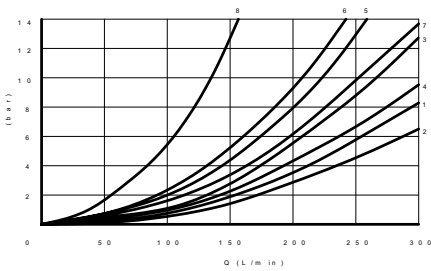
WEH 10..



WEH10

	P	A	P	B	A		T	B	T	P
E, Y, D	2	2	4	4	5					
F	1	4	1	4		F	3	-	6	
G T	4	2	2	6		G T	-	-	7	
H C	4	4	1	4		H	1	3	5	
J K	1	2	1	3						
L	2	3	1	4		L	3	-	-	
M	4	4	3	4						
P	4	1	3	4		P	-	7	5	
Q, V, W, Z	2	2	3	5						
R	2	2	3	-						
U	3	3	3	4		U	-	4	-	

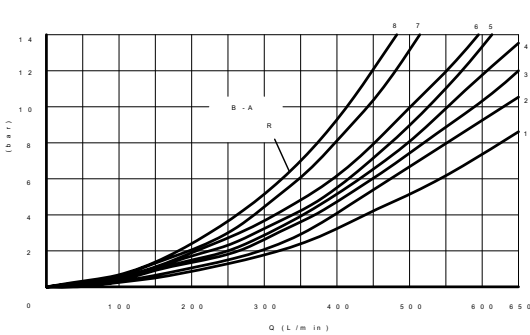
WEH 16..



WEH16

	P	A	P	B	A	T	B	T	P	T
E, Y, D	1	1	1	3	3	-				
F	2	2	3	3	-					
G T	5	1	3	7	6					
H, C, Q, V, Z	2	2	3	3	-					
J, K, L	1	1	3	3	-					
M, W	2	2	4	3	-					
R	2	2	4	-	-					
U	1	1	4	7	-					
S	4	4	4	-	8					

WEH 25..



WEH25

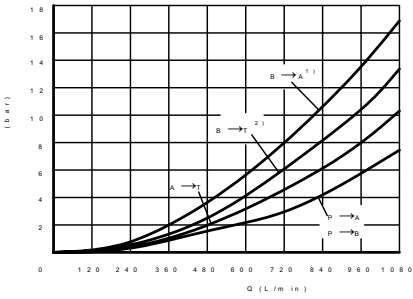
7 G P-T
8 T P-T

	P	A	P	B	A	T	B	T
E	1	1	1	3				
F	1	4	3	3				
G	3	1	2	4				
H	4	4	3	4				
J, Q	2	2	3	5				
L	2	2	3	3				
M	4	4	1	4				
P	4	1	1	5				
R	2	1	1	-				
U	4	1	1	6				
V	2	4	3	6				
W	1	1	1	3				
T	3	1	2	4				

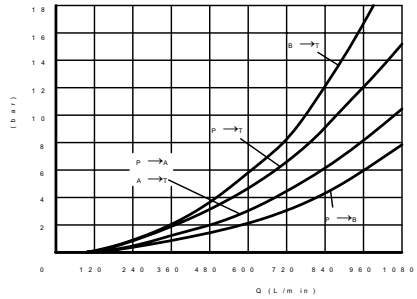
(HLP46 $\varnothing = 40 \pm 5$)

WEH 32..

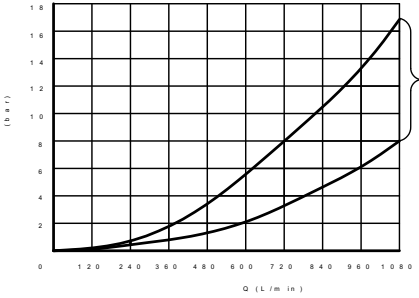
p-qv - E R W



p-qv - G T



p-qv -



- 1) R
- 2) R

WEH32

		(mm ²)			
		P A	P B	A T	B T
WEH10	Q	-	-	13	13
	V	13	13	13	13
	W	-	-	2.4	2.4
WEH16	Q	-	-	32	32
	V	32	32	32	32
	W	-	-	6	6
WEH25	Q	-	-	83	83
	V	83	83	83	83
	W	-	-	14	14
WEH32	Q	-	-	78	78
	V	73	73	84	84
	W	-	-	20	20

25um

A B

WEH10

(L/min)	(bar)		
	200	250	315
E J L M Q U W R V	160		
H	160	150	120
G T	160		140
F P	160	140	120
C D K Z Y	160		

(L/min)	(bar)		
	200	250	315
HC HD HK HZ HY	160		
HC.../O HD.../O HK.../O HZ.../O	160		
HC.../OF... HD.../OF... HK.../OF... HZ.../OF...	160		

WEH16

(L/min)	(bar)					(L/min)	(bar)				
	70	140	210	280	350		70	140	210	280	350
E H J L M Q U W R	300	300	300	300	300	C	300	300	300	300	300
F P	300	250	180	170	150	D Y	300	270	260	250	230
G T	300	300	240	210	190	K	300	250	240	230	210
S	300	300	300	250	220	Z	300	260	190	180	160
V	300	250	210	200	180	HC, HD, HK, HZ, HY	300	300	300	300	300
						H F P G T S 160L/min					
						V C Z					

WEH25

(L/min)	(bar)					(L/min)	(bar)				
	70	140	210	280	350		70	140	210	280	350
E L M U W Q	650	650	650	650	650	G D K Z Y	650	650	650	650	650
G T	400	400	400	400	400	HC HD HK HZ HY	650	650	650	650	650
F	650	550	430	330	300	HC.../O	650	650	650	650	650
H	650	650	550	400	360	HD.../O					
J	650	650	650	600	520	HK.../O					
P	650	550	430	330	300	HZ.../O					
V	650	550	400	350	310	HC.../OF...	650	650	650	650	650
R	650	650	650	650	580	HD.../OF...					
G, T	400	400	400	400	400	HK.../OF...					
						HZ.../OF...					
P T							G Z V F H 180L/min				

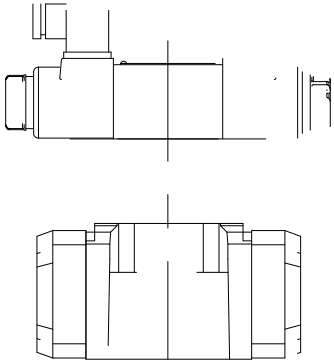
WEH32

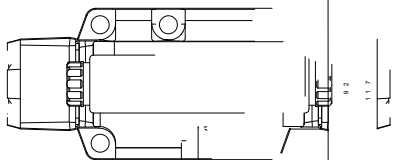
(L/min)	(bar)					(L/min)	(bar)				
	70	140	210	280	350		70	140	210	280	350
E J L M R U W R	1100	1040	860	750	680	C D K Z Y	1100	1040	860	750	680
H G	1100	1000	680	500	450						
F T P	820	630	510	450	400	HC, HD, HK, HZ, HY	1100	1040	860	750	680
H V Z							C G T F P 180L/min				

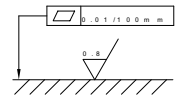
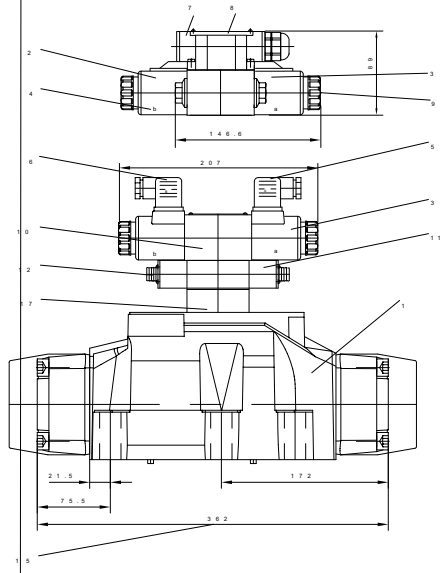
6

4WE6...

/	4WE6J-6X/... / 4WE6JA... 4WE6JB...
: Y.../... HY.../... B.../... HB.../...	4WE6Y-6X/...
A C D K Z HA HC HD HK HZ	D 4WE6D-6X/... 4WE6D-6X/O... 4WE6D-6X/OF...







R 20.55035

1 1



+86 400 101 8889	+01 630 995 3674
+49 172 3683463	+81 03 6809 1696



©