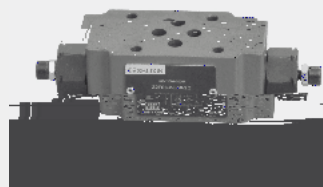


Z2FS6...L4X



02

—

03

—

DIN 24340A ISO4401

03

—

2

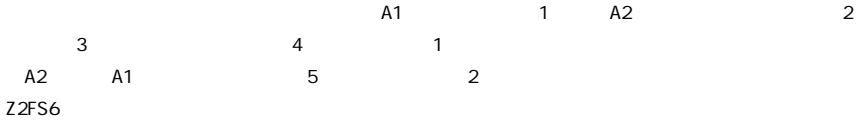
04

—

04

05

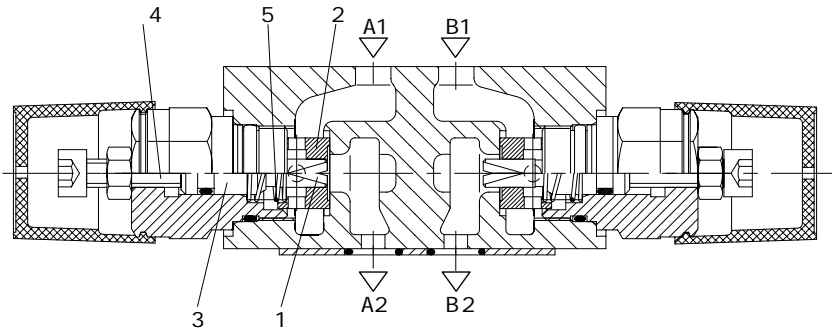
Z2FS6

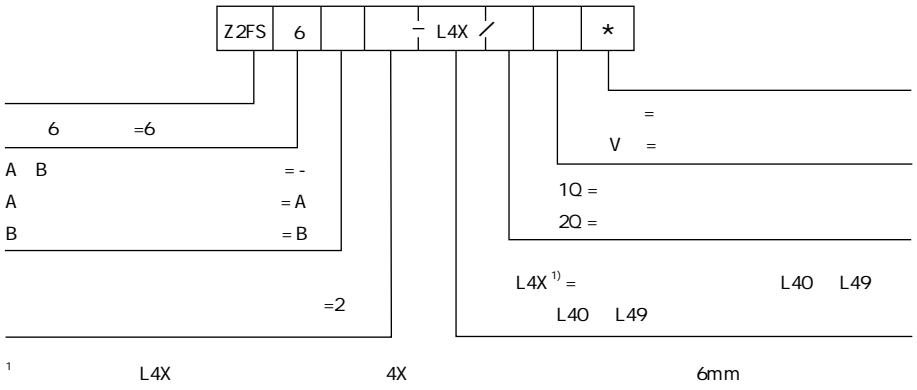


2Q

1Q

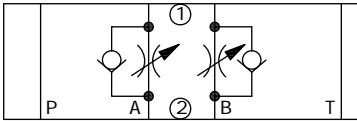
04



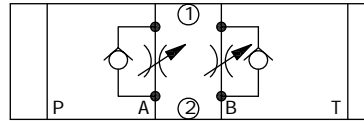


()

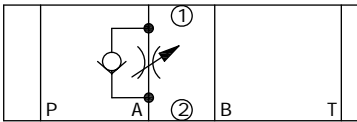
Z2FS6...-L4X/()



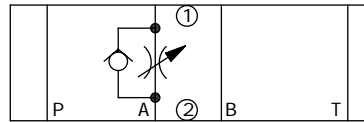
Z2FS6...-L4X/()



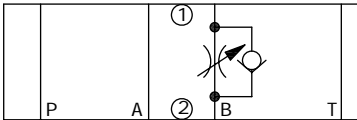
Z2FS6A...-L4X/()



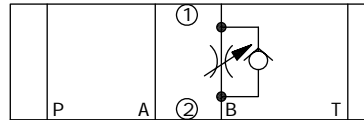
Z2FS6A...-L4X/()



Z2FS6B...-L4X/()



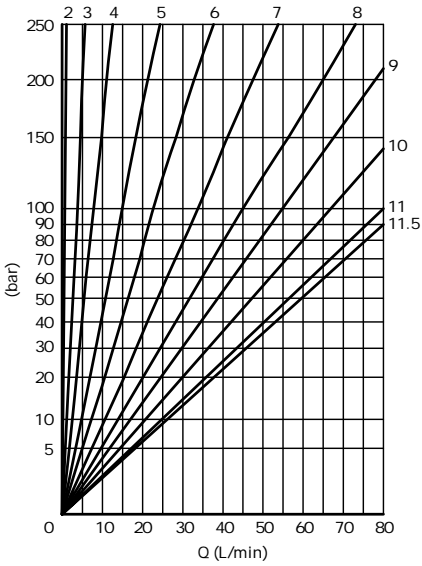
Z2FS6B...-L4X/()



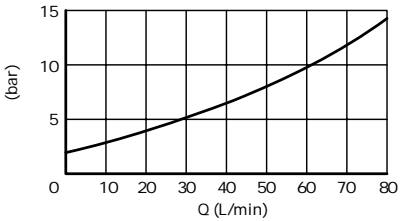
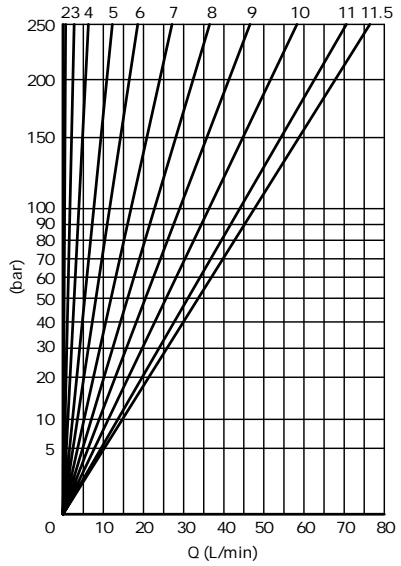
	-30	+80
	-20	+80
mm ² /s	10	800
	NAS1638 9 ISO4406 20/18/15	
bar	315	
L/min	80	
kg	1.0	

HLP46 $\varnothing = 40 \pm 5$

P-QV- Z2FS6...-L4X/2QV



P-QV- Z2FS6...-L4X/1QV



+86 400 101 8889

+01 630 995 3674

+49 172 3683463

+81 03 6809 1696



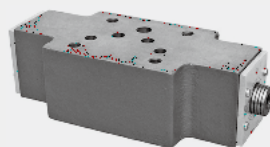
©



4.5

Z2FS6 10 16 22...30

6 10 16 22
350bar
360L/min



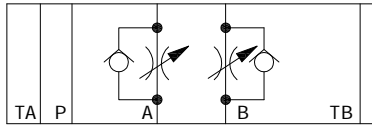
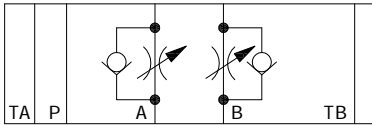
02	-		
02	-	DIN 24340A	ISO 4401
03	-	2	
03			
04			
05-06			

o

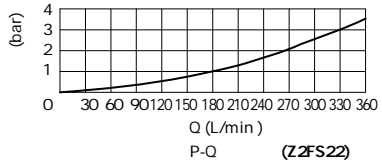
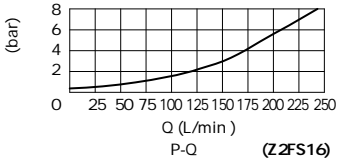
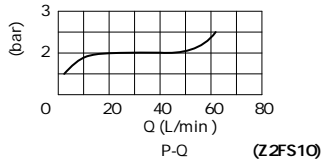
o

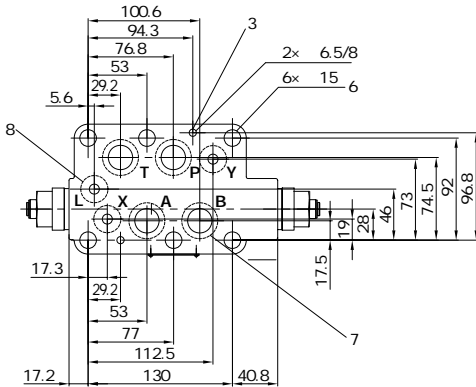
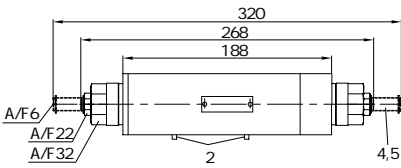
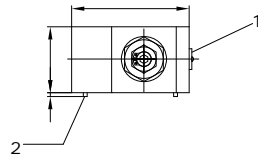
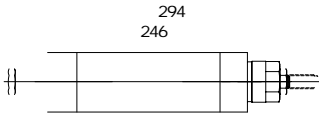


04



HLP46 $\varnothing = 40 \pm 5$





117

55

6

4