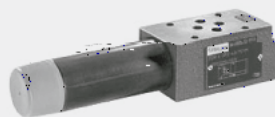




3.15

ZDR6D...L4X 型

(NG) 6
210bar
50L/min



目录

02	-
03	-
03	- 4
03	- 2
04	·
05	·

特点

DIN24340A ISO4401

ZDR6D

1 2 2 3 4

DA

A1 A2 A2 5

A2 3 2

A2 5 A2

3 A2

A2

2

9

7

6

T

Y

8

DA

A2

A1

03

DP DB

DP

P1

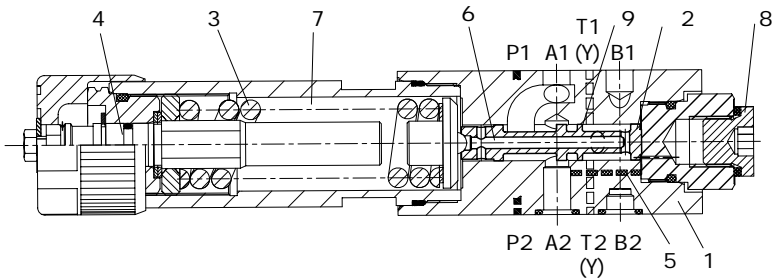
P1

DB

P1

B

ZDR6DA1-L4X/...YM..



1. DB

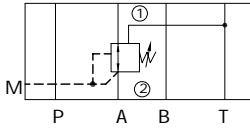
P A

B

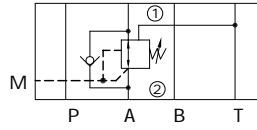
A

2.

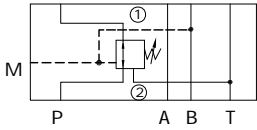
ZDR6DA...L4X/.YM



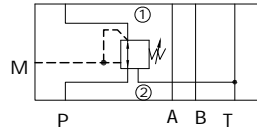
ZDR6DA...L4X/.Y



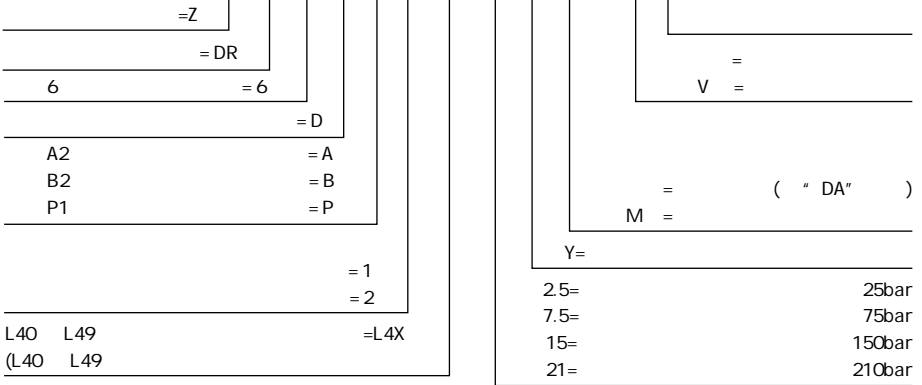
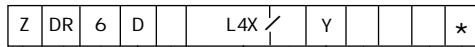
ZDR6DB...L4X/.YM



ZDR6DP...L4X/.YM



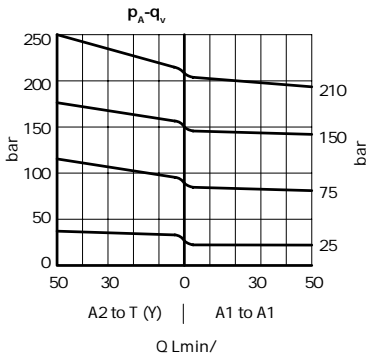
=
=



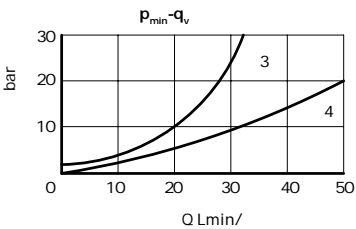
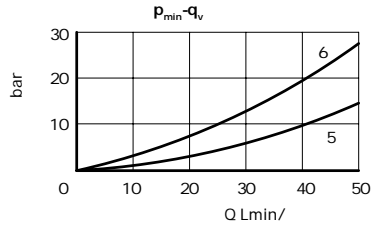
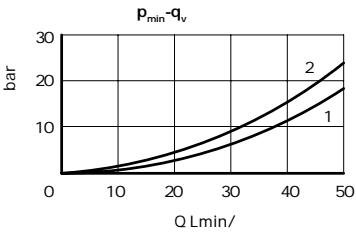
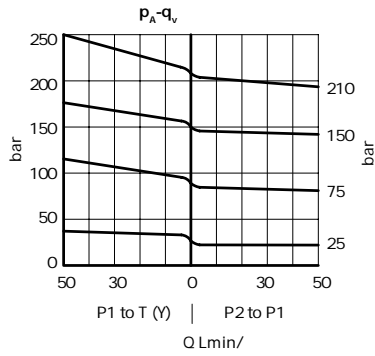
	-
	-
	-30 +80 ()
	-20 +80 ()
mm ² /s	10 800
	ISO 4406 20/18/15 NAS 1638 9
() bar	315
() bar	25; 75; 150; 210
T(Y) bar	160

HLP46 =40 ± 5

ZDR6DA



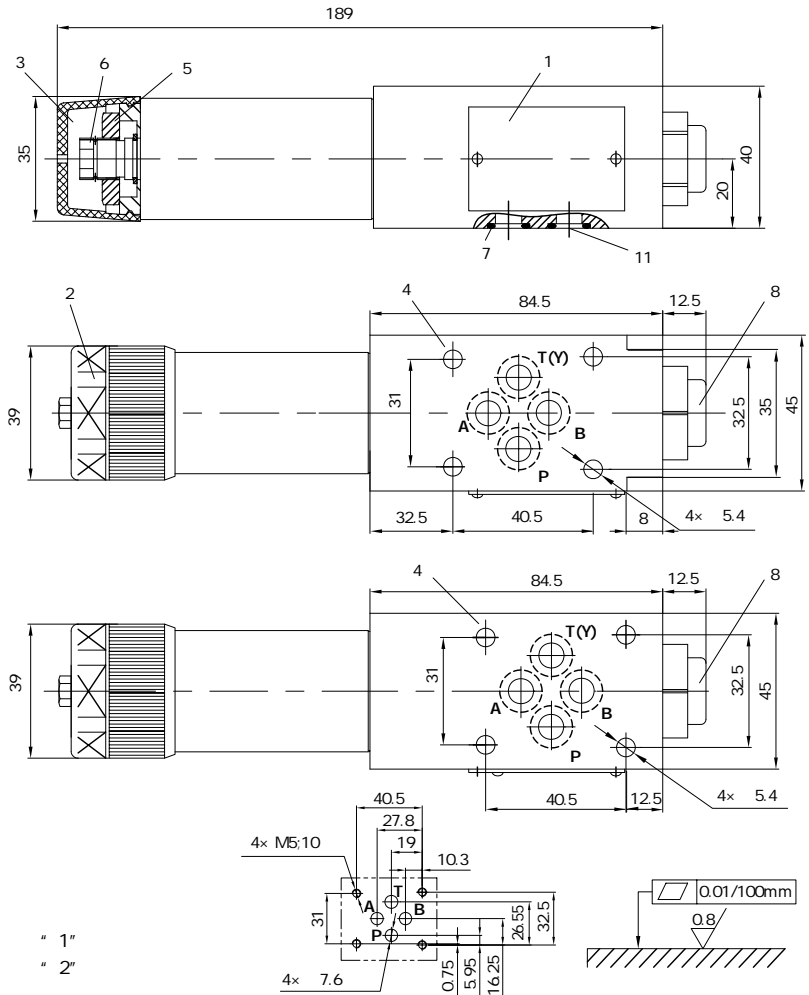
ZDR6DP ZDR6DB



- 1 A1 A2
- 2 A2 T(Y) ()
- 3 A2 A1
- 4 A2 A1
- 5 P2 P1
- 6 P1 T(Y) ()

=0

(mm)



- 1 " 1"
- 2 " 2"
- 3 " 2"
- 4
- 5 S=24
- 6 S=10
- 7 O 9.25x 1.78 (A B P T)
- 8 G1/4 M14x 1.5 12
- S=6

G 341/01(G1/4), G 341/02(M14x 1.5)
 G 342/01(G3/8), G 342/02(M18x 1.5)
 G 502/01(G1/2), G 502/02(M22x 1.5)

M5 GB/T 70.1-10.9
 LT 30.01
 $M_k=8.9Nm$

LT 30.02

中国

+86 400 101 8889

美国

+01 630 995 3674

德国

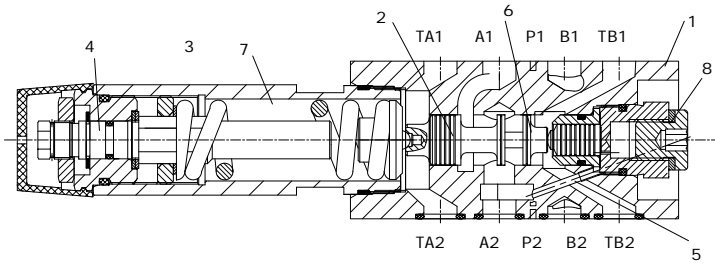
+49 172 3683463

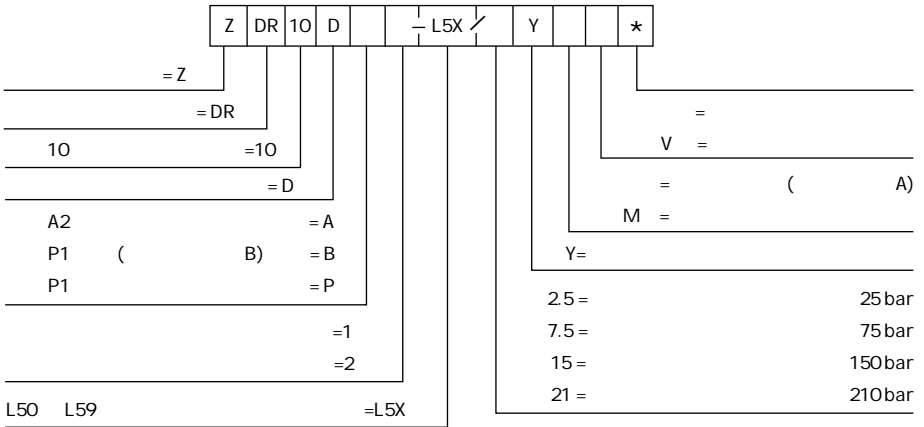
日本

+81 03 6809 1696



©



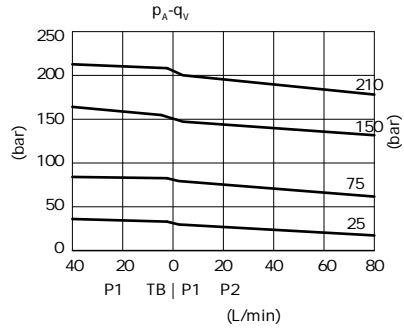
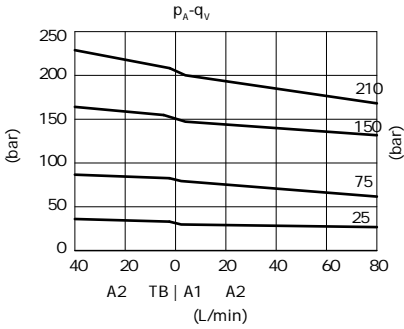


	-
	-
	-30 +80 ()
	-20 +80 ()
mm ² /s	10 800
	NAS1638 9 ISO4406 20/18/15
() bar	315
() bar	25; 75; 150; 210
bar	150
L/min	80
Kg	2.8

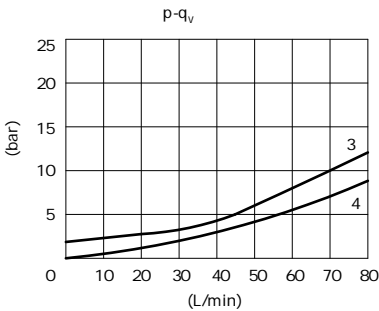
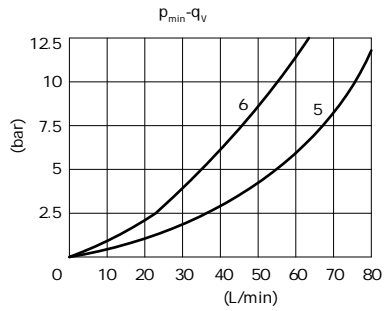
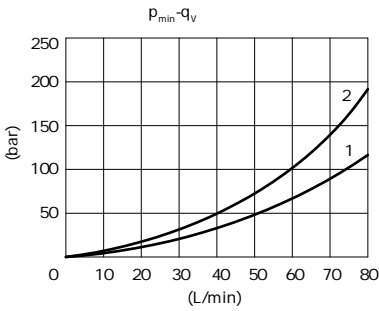
HLP46 =40 ± 5

ZDR 10DA..-L5X/...

ZDR 10DP..-L5X/... ZDR 10DB..-L5X/...



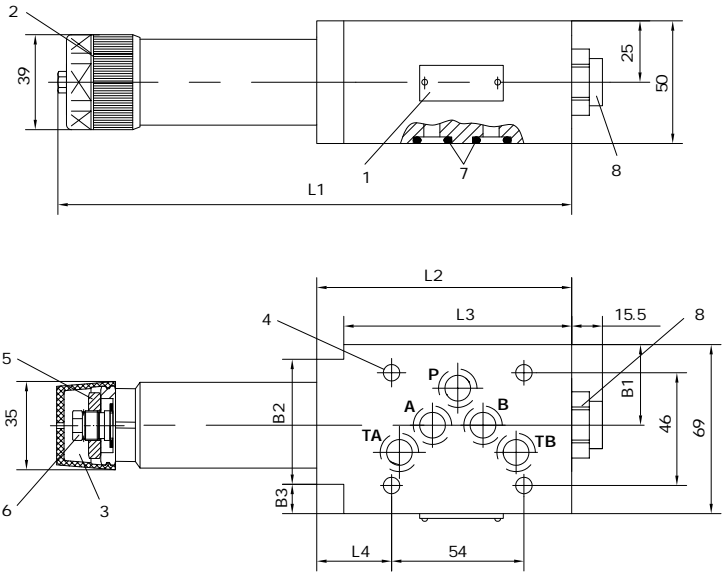
!



- 1 A1 A2
- 2 A2 TB ()
- 3 A2 A1
- 4 A2 A1
- 5 P2 P1
- 6 P1 TB ()

pt=0bar

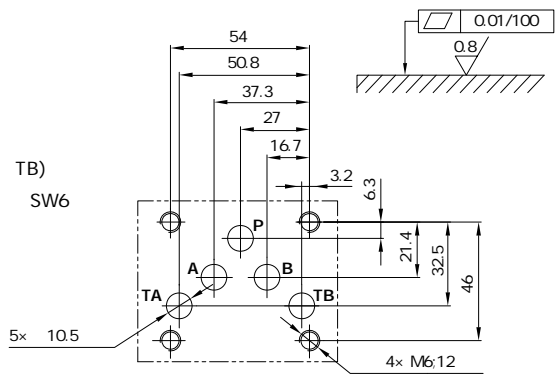
(mm)



- 1
- 2 " 1"
- 3 " 2"
- 4
- 5 SW24
- 6 SW10
- 7 O 12x 2(A B P TA TB)
- 8 G1/4 12 SW6

M6 GB/T70.1-10.9

$M_k=15.5Nm$



	L1	L2	L3	L4	B1	B2	B3
"DA"	210	104	93	31.5	32.9	51	12
"DB" "DP"	198	91	-	18.5	35	-	-

中国

+86 400 101 8889

美国

+01 630 995 3674

德国

+49 172 3683463

日本

+81 03 6809 1696



©