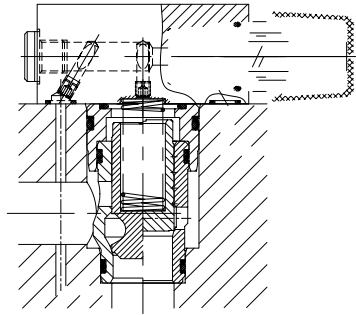


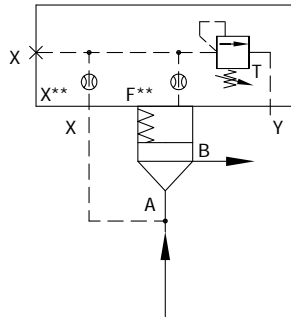
插装阀 L-LC.. 型
控制盖板 L-LFA... 型



目录



05



a)

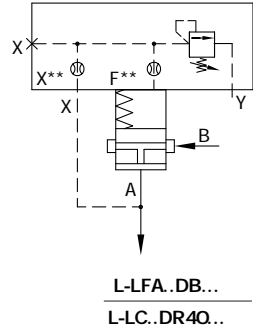
L-LFA..DB...
L-LC..DR...

1:1 B

L-LFA..DB...
A

A

A



b)

L-LFA..DR...
L-LC..DB..D...

L-LC..BD..

D...

L-LFA..DR...

A

B

A B

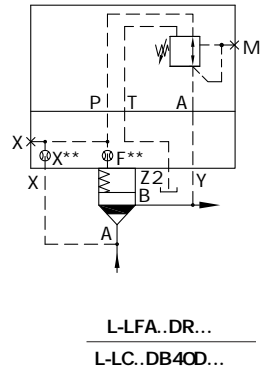
B

"

"

B

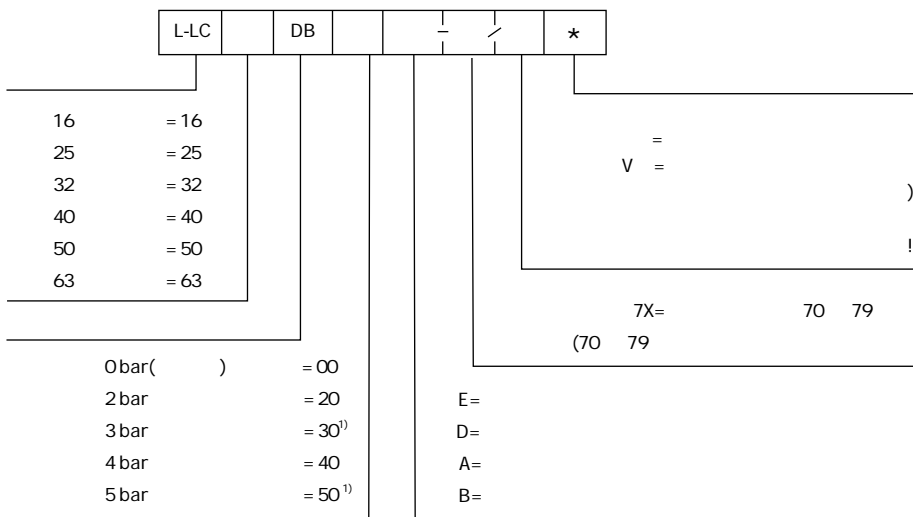
L-LFA..DRW...



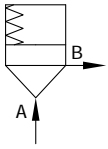
5.2-1(1)

插装阀 L-LC.DB... 型

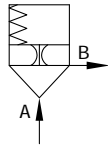
05



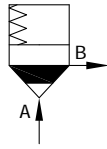
¹⁾ 16 25 32



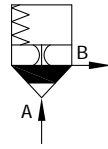
" E "



" A "



" D "



" B "

05

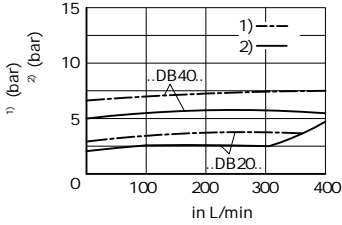
HLP46 $\varnothing = 40 \pm 5$

25

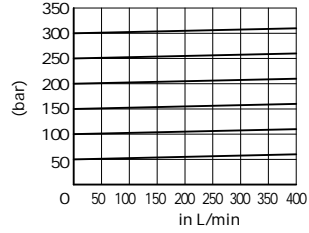
B

L-LFA25DB... L-LFA25DBW...

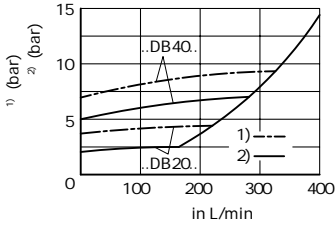
L-LC 25DB..E ()



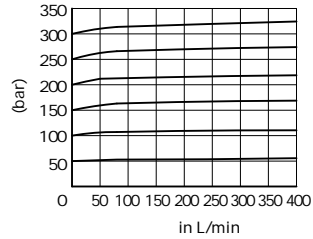
()



L-LC 25DB..D ()



()



05

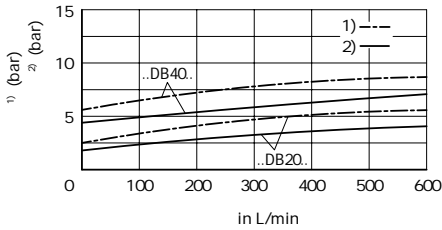
HLP46 $\vartheta = 40 \pm 5$

32

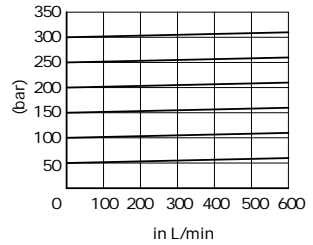
B

L-LFA32DB... L-LFA32DBW...

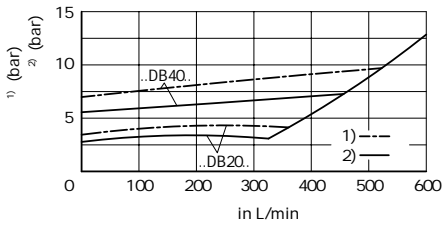
L-LC 32DB..E (



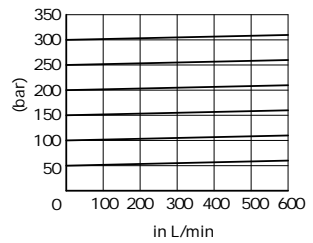
)



L-LC 32DB..D (



)



05

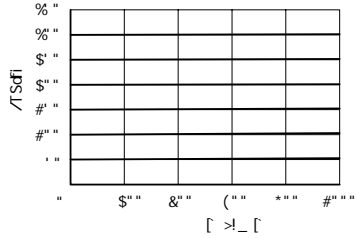
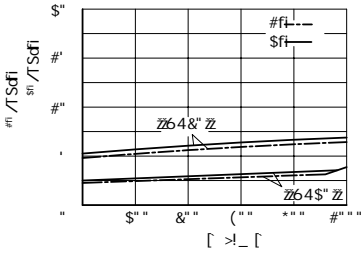
HLP46 $\varnothing = 40 \pm 5$

40

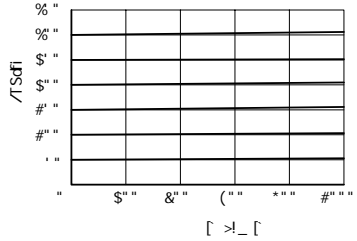
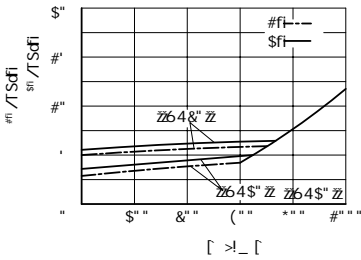
B

L-LFA40DB... L-LFA40DBW...

L-LC 40DB..E ()



L-LC 40DB..D ()



05

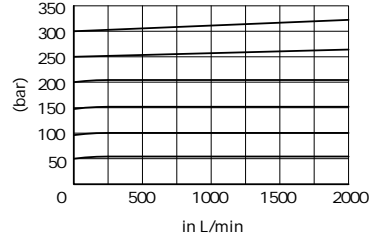
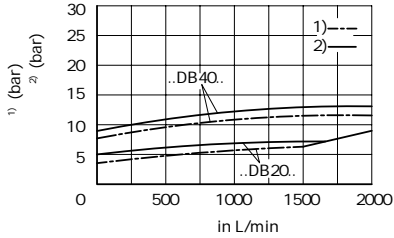
HLP46 $\vartheta = 40 \pm 5$

50

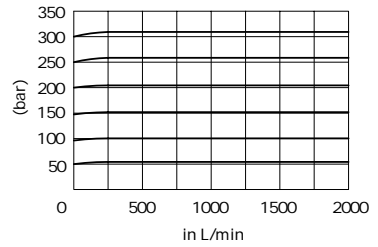
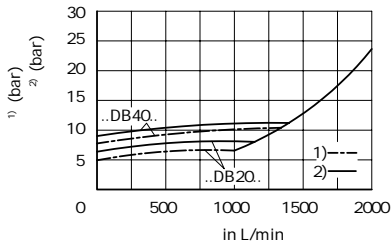
B

L-LFA50DB... L-LFA50DBW...

L-LC 50DB..E ()



L-LC 50DB..D ()



05

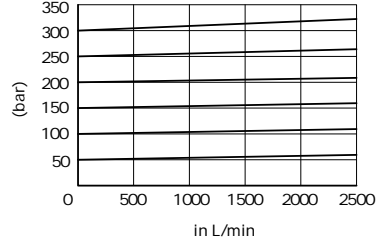
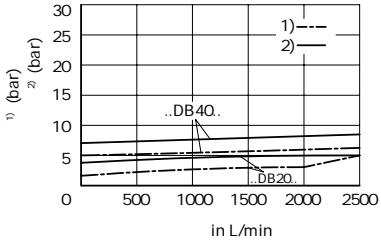
HLP46 $\varnothing = 40 \pm 5$

63

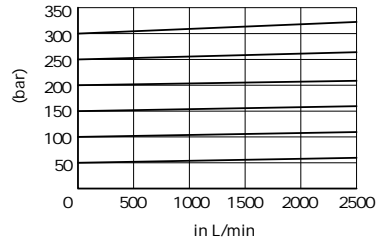
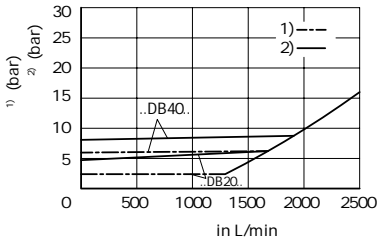
B

L-LFA63DB... L-LFA63DBW...

L-LC 63DB..E ()



L-LC 63DB..D ()



4" ' " 32

1(2A ž5ž

控制盖板 L-LFA.DB... 型

05

			Y,T bar		
			X		
DBD.2K-L20/... ¹⁾	16	32	DB,DBW,DBWD, 420	0 (2 bar)	315
DBD.6K10/... ²⁾	40	63	DBU2,DBBU3D, 400		315
.WE6...			DBEM,DBS 350		21(=); 16(-)

¹⁾ : 25, 50, 100, 200, 315, 400

²⁾ : 25, 50, 100, 200, 315, 420

(L-LFA.DB... , !)

bar	420	:
	-	
	-	
	-30	+80 ()
	-20	+80 ()
mm ² /s	2.8	380
	NAS 1638 9 ISO4406 20/18/15 ³⁾	

³⁾

O X Y

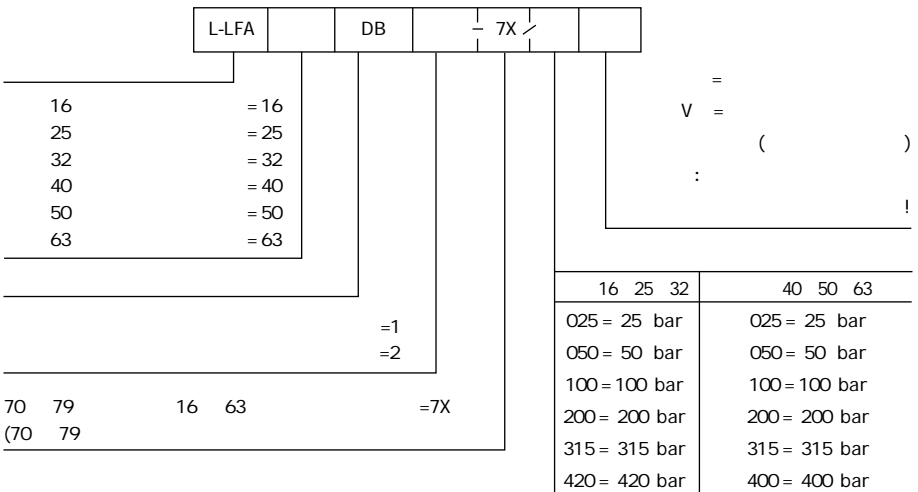
16	8× 1.8
25	9.25× 1.78
32	10.82× 1.78

40	12× 2.5
50	
63	18.72× 2.62

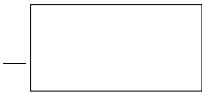
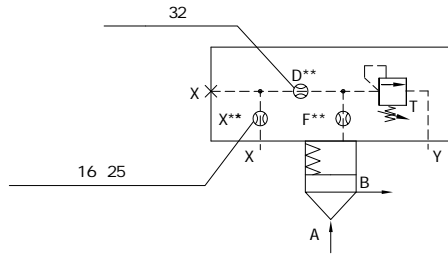
GB/T70.1 10.9			
			(Nm)
16	4	M8× 45	32
25		M12× 50	110
32		M16× 60	270
40		M20× 70	520

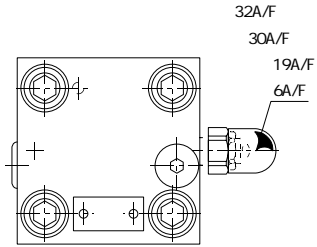
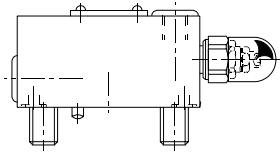
GB/T70.1 10.9			
			(Nm)
50	4	M20× 80	520
63		M30× 100	1800

..DB... (16 63)



05

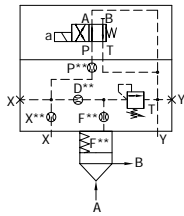




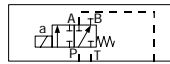
19A/F
32A/F

6A/F
30A/F

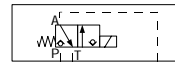
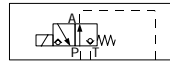
4WE 6D.../..



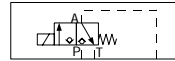
3WE 6B 9.../..



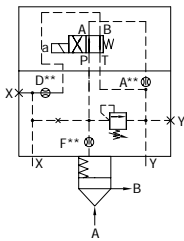
M-3SED 6C.../350

M-3SED 6U.../350
M-3SEW 6U.../420

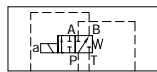
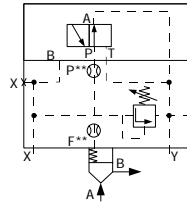
M-3SEW 6C.../420



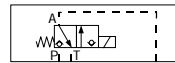
4WE 6D.../..



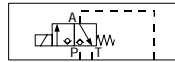
3WE 6B 9.../..

M-3SED 6U.../350
M-3SEW 6U.../420

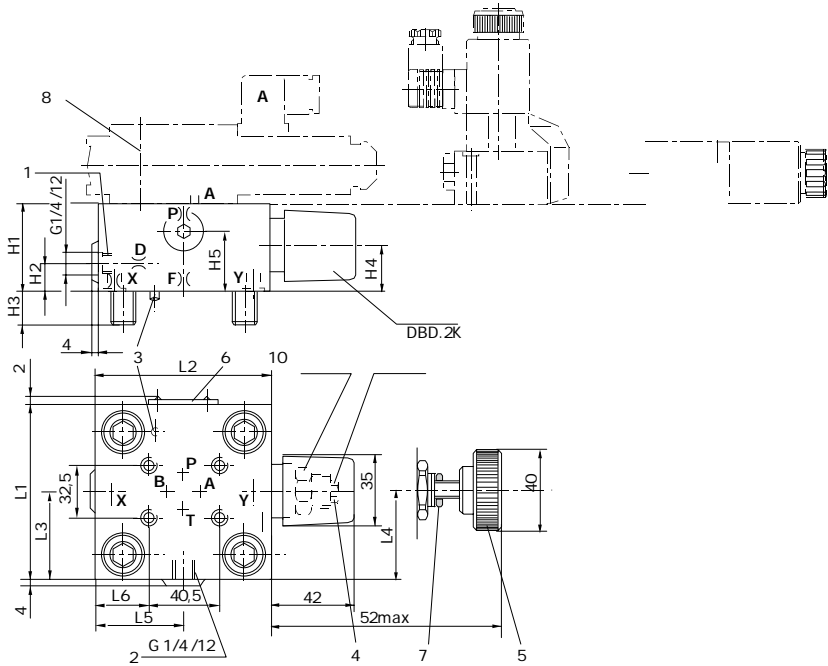
M-3SED 6C.../350



M-3SEW 6C.../420



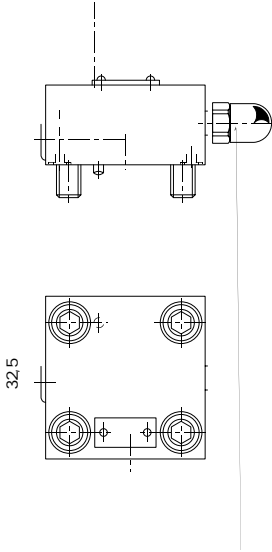
..DBW.. (16 25 32)



	H1	H2	H3	H4	H5	L1	L2	L3	L4	L5	L6	L7	kg
16	40	17	15	19	28	65	80	36.5	32.5	35	7	17	1.7
25	40	19	24	19	28	85	85	49	45.5	36	8	27	2.1
32	50	26	28	26	37	100	100	56.5	53	57	31	34.5	3.8

- 1 X
- 2 Y
- 3
- 4 " 2"
- 5 " 1"

..DBW...; ..DBS... (40 50)



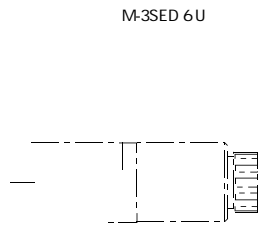
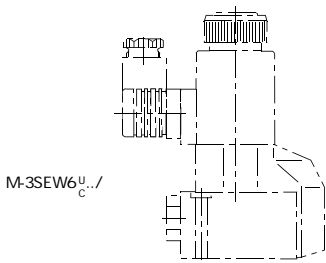
	D1	T1	H1	H2	H3	H4	H5	L1	L3	L4	L5	L6	L7	kg
40	G1/4	12	60	46	32	27	40	125	62.5	76	68	43.5	47	6.8
50	G1/2	14	68	51	34	35	50	140	67.5	84	74.5	51	54.5	9.6

1	X	6
2	Y	7
3		8 WE6 M5× 50-10.9
4	" 2"	GB/T70.1
5	" 1"	

35

60

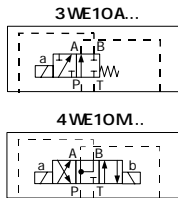
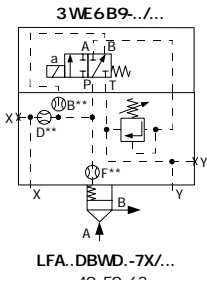
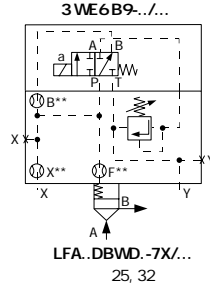
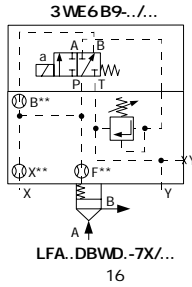
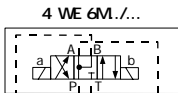
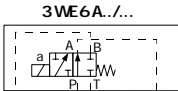
05



..DBWD... (16 63)

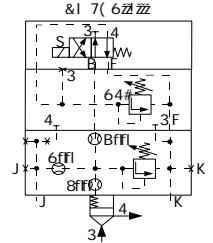
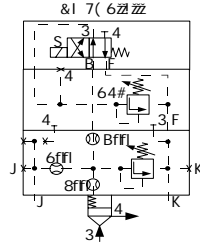
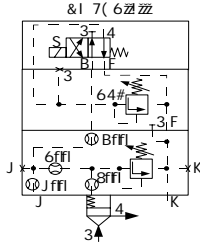
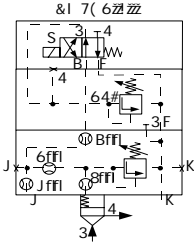
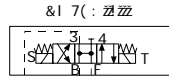
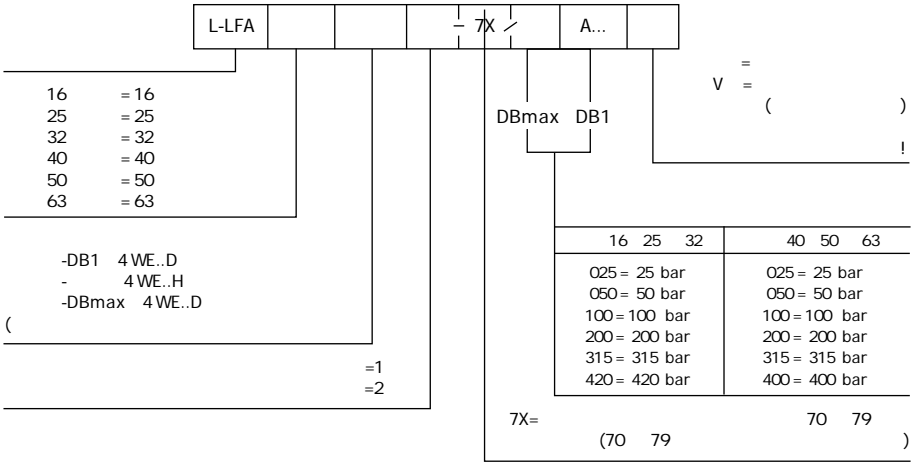
L-LFA		DBWD	- 7X /				
16	= 16			=			
25	= 25				V		
32	= 32					(
40	= 40)
50	= 50						
63	= 63						
70 79		=1					
(70 79		=2					
			=7X				

16	25	32	40	50	63
025 = 25 bar			025 = 25 bar		
050 = 50 bar			050 = 50 bar		
100 = 100 bar			100 = 100 bar		
200 = 200 bar			200 = 200 bar		
315 = 315 bar			315 = 315 bar		
420 = 420 bar			400 = 400 bar		



2

..DBU2A...; ..DBU2B... (16 63)



LFA..DBU2A.-7X...
16, 25, 32

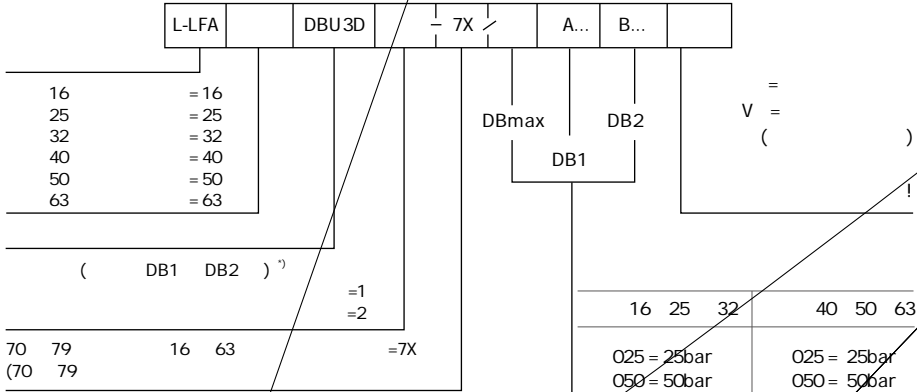
LFA..DBU2B.-7X...
16, 25, 32

LFA..DBU2A.-7X...
40, 50, 63

LFA..DBU2B.-7X...
40, 50, 63

3

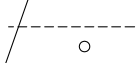
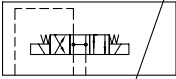
..DBU3D... (16 63)



* DB1 DB2

16	25	32	40	50	63
025 = 25bar	050 = 50bar	100 = 100bar	200 = 200bar	315 = 315bar	420 = 420bar
025 = 25bar	050 = 50bar	100 = 100bar	200 = 200bar	315 = 315bar	400 = 400bar

05

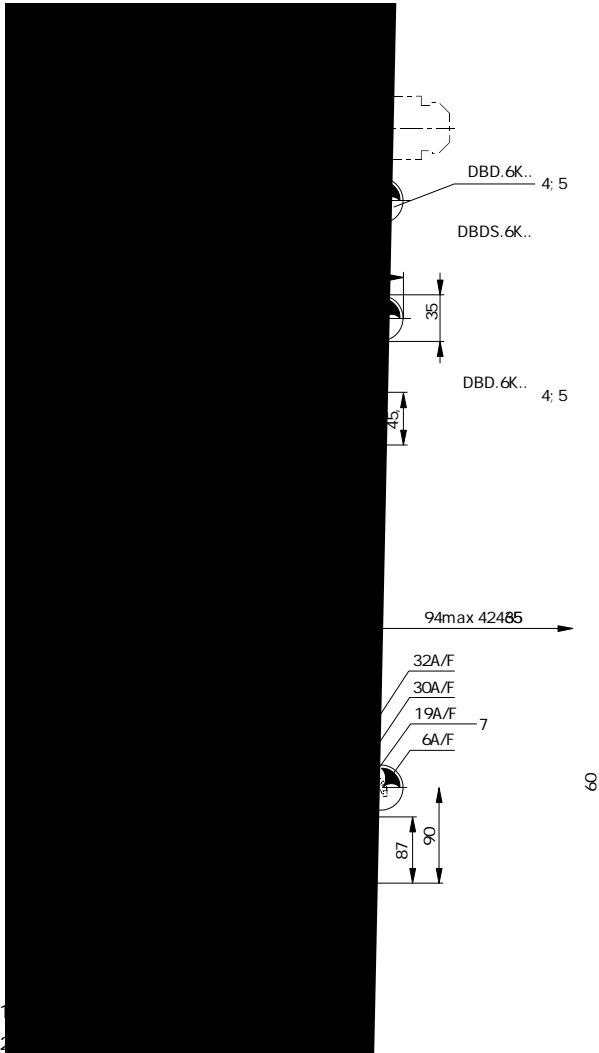


L-LFA...DBU3D.-7X/...
16 25 32

L-LFA...DBU3D.-7X/...
40 50 63

3

..DBU3D... (63)



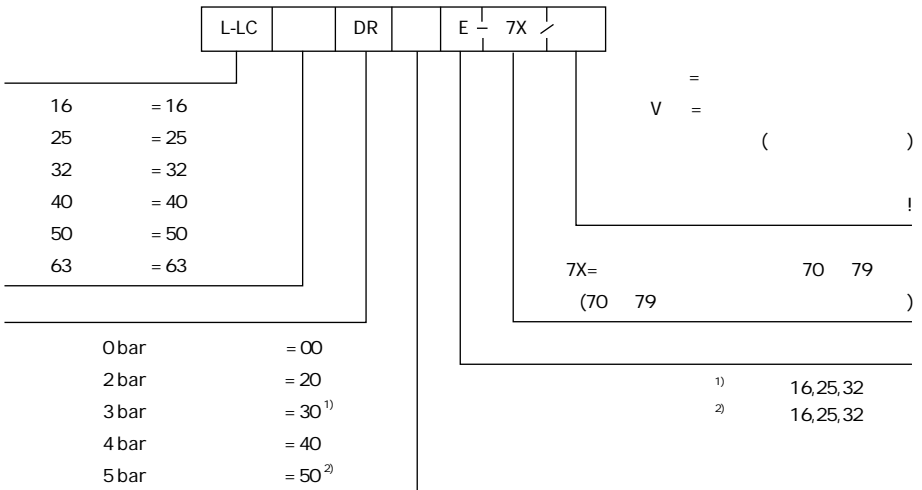
05

- 3
- 4 " 2"
- 5 " 1"

5.2-2(1)

插装阀 L-LC.DR... 型

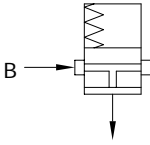
L-LFA..DB..



05

:

L-LC..DR..

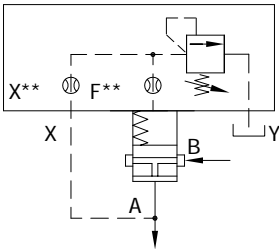


()	A B bar	315					
		16	25	32	40	50	63
L-LC..DR20.../...	L/min	100	200	300	750	1000	1600
		L-LC..DR40.../...	150	300	450	1000	1300
	kg	0.25	0.5	1.1	1.9	3.9	7.2
		-					
		-					
		-30	+80()				
		-20	+80()				
	mm ² /s	2.8	380				
		NAS1638 9					
		ISO4406 20/18/15 ¹⁾					

05

LC..DR...

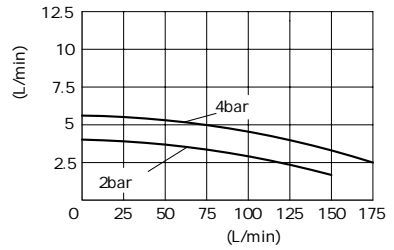
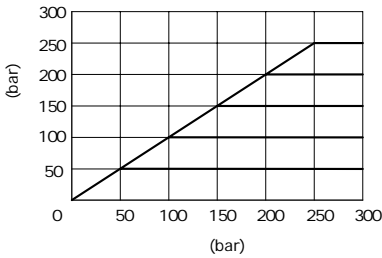
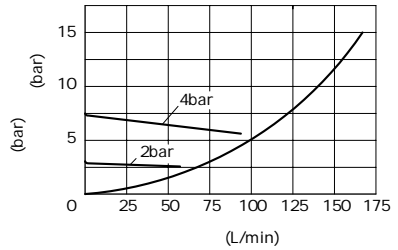
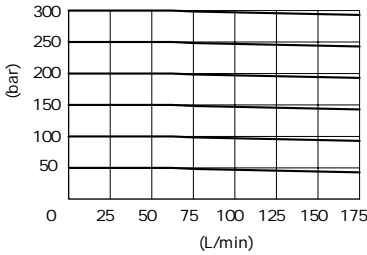
LFA..DB...



: L-LFA..DB...
L-LC..DR40..

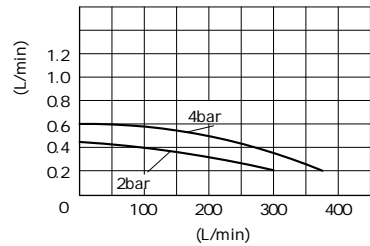
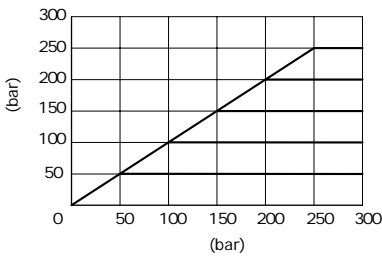
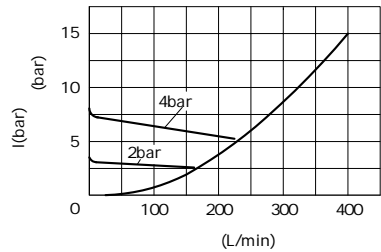
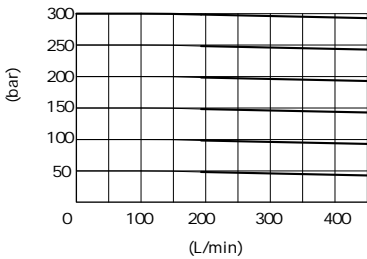
HLP46 $\varnothing = 40 \pm 5$

L-LC16DR...



L-LC 25DR...

pa=50bar

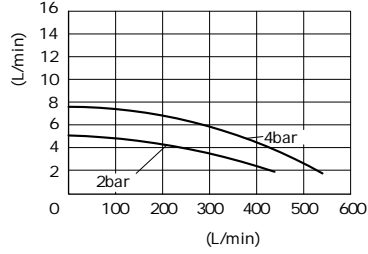
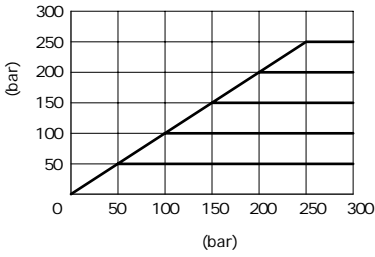
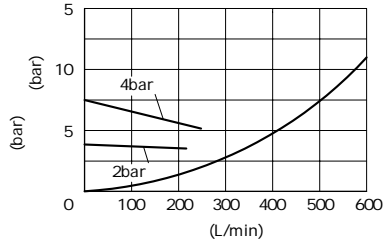
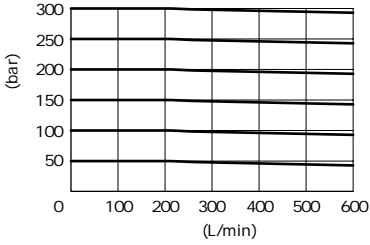


pa=50bar

05

HLP46 $\varnothing = 40 \pm 5$

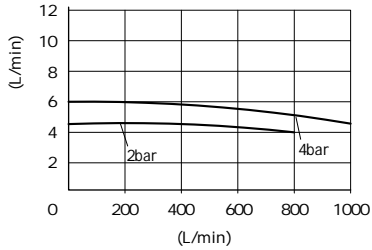
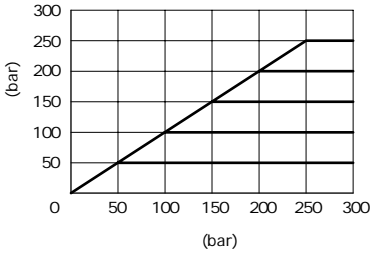
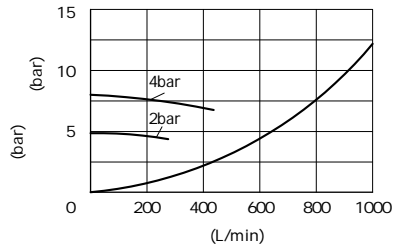
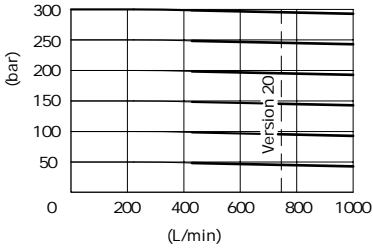
L-LC 32DR...



05

pa=50bar

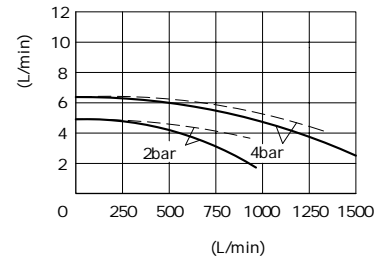
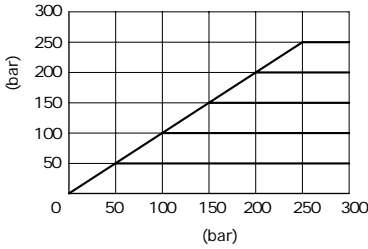
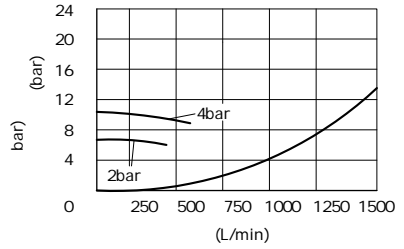
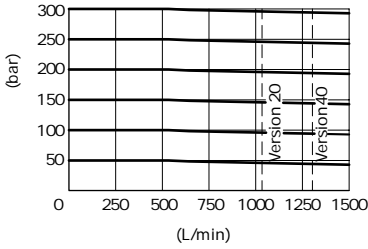
L-LC 40DR...



pa=50bar

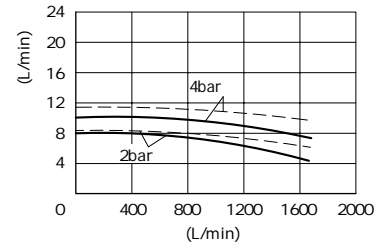
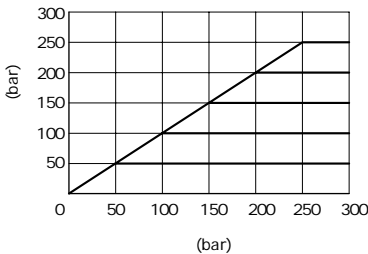
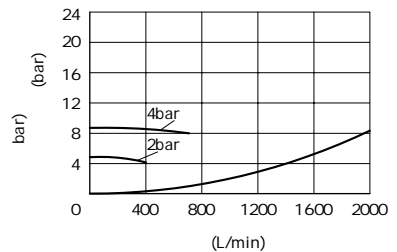
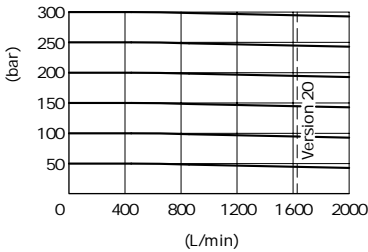
HLP46 $\varnothing = 40 \pm 5$

L-LC 50DR...



L-LC 63DR...

pa=50bar
 — pe=100bar
 --- pe=350bar

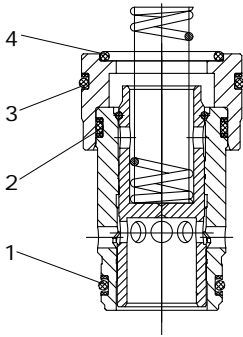


pa=50bar

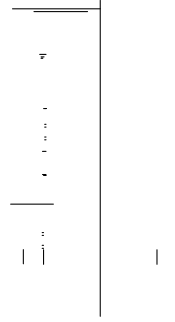
05

O

L-LC..



L-LC..DR...



L-LC..DR...

05

	16	25	32
1	21.2× 1.8	28× 2.65	40× 2.65
2	22.4× 2.65	32.5× 2.65	43.7× 3.55
3	26.5× 2.65	38.7× 3.55	54.5× 3.55
4	20× 2.65	30× 2.65	37.5× 3.55

	40	50	63
5	48.7× 3.55	61.5× 3.55	80× 5.3
6	69× 3.55	80× 5.3	109× 5.3
7	67× 3.55	77.5× 5.3	106× 5.3

5.2-2(2)

控制盖板 L-LFA.DR... 型

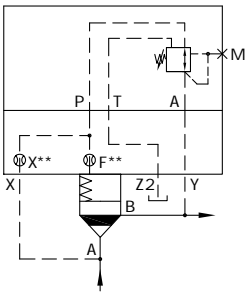
	-					
	-30 +80()					
	-20 +80()					
mm ² /s	2.8 380					
	NAS1638 9 ISO4406 20/18/15 ¹					
	16	25	32	40	50	63
kg	3.1	3.6	5.2	8	11.4	20.8

05

(L-LFA.DR (DRW) ...

1

...		L-LFA..DR.-../... L-LFA..DRW.-../...
...X ()		315bar
...Y (=)		315bar
...Z2		0 (2bar)
		60bar



L-LFA..DR...
L-LC..DB...

L-LFA..DR...
L-LC..DB 40D...

X Y Z1 Z2 O

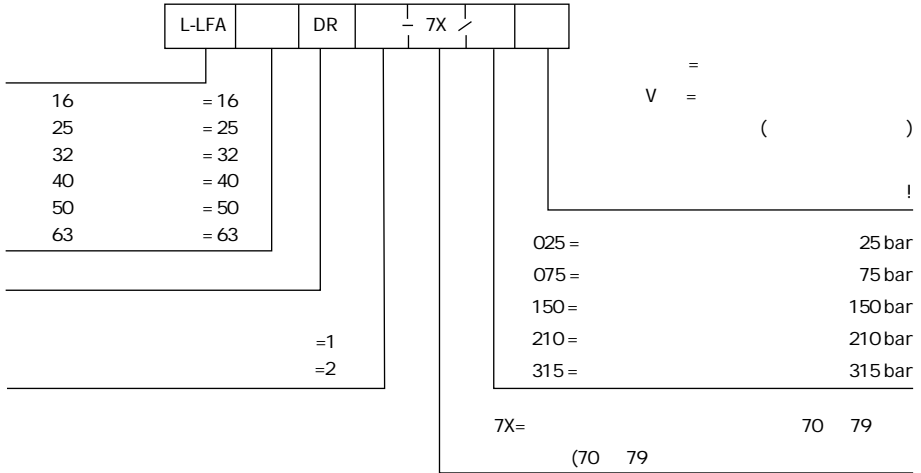
	mm
16	8× 1.8
25	9.25× 1.78
32	10.82× 1.78

	mm
40	12× 2.5
50	
63	18.72× 2.62

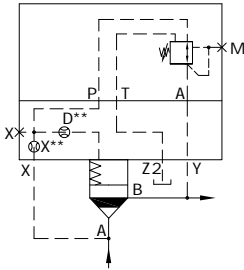
GB/T70.1 10.9			
			(Nm)
16	4	M8× 45	32
25		M12× 50	110
32		M16× 60	270

GB/T70.1 10.9			
			(Nm)
40	4	M20× 70	520
50		M20× 80	520
63		M30× 100	1800

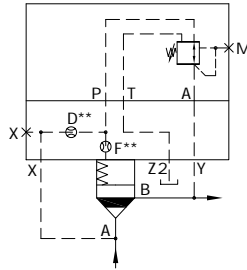
..DR... (16 63)



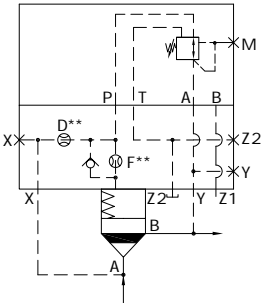
05



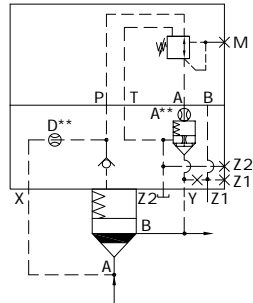
L-LFA...DR.7X/...
16



L-LFA...DR.7X/...
25 32



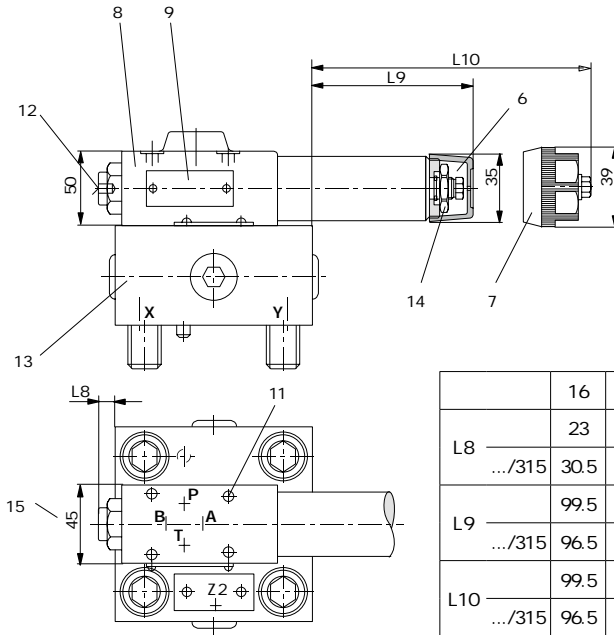
L-LFA...DR.7X/...
40 50



L-LFA...DR.7X/...
63

mm

..DR... (16 63)



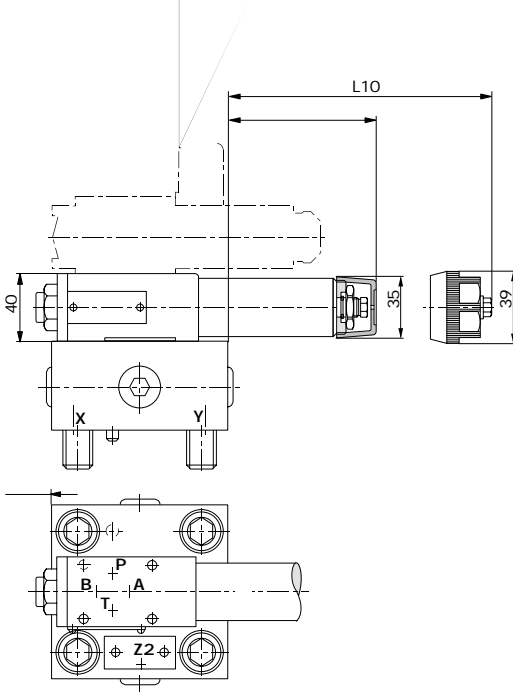
	16	25	32	40	50	63
L8	23	6				
.../315	30.5	14	6			
L9	99.5	111	103.5	91	83.5	67.5
.../315	96.5	108	100.5	88	80.5	64.5
L10	99.5	111	103.5	91	83.5	67.5
.../315	96.5	108	100.5	88	80.5	64.5
	" 41/46"					

- | | | | | |
|----|-----|----|---------|------|
| 6 | "2" | 12 | G 1/4 | 12 |
| 7 | "1" | | A/F6 | |
| 8 | (| 13 | | |
| 9 | | 14 | A/F24 | |
| 11 | | 15 | .../315 | 50mm |

GB/T70.1-M5x 50-10.9 $M_h=8.9Nm$
()

mm

..DRW.. (16 63)



05

- 6 " 2"
- 7 " 1"
- 8
- 9
- 11

GB/T70.1-M5× 90-10.9 M_k=8.9Nm

()

3WE6B9...

05

中国

+86 400 101 8889

美国

+01 630 995 3674

德国

+49 172 3683463

日本

+81 03 6809 1696



©