

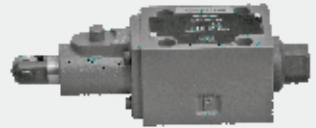


4/3, 4/2 and 3/2 directional valve with mechanical, manual operation

26

Type WMR(U)6...L6X

Size 6
Up to 315 bar
Up to 60L/min



Contents

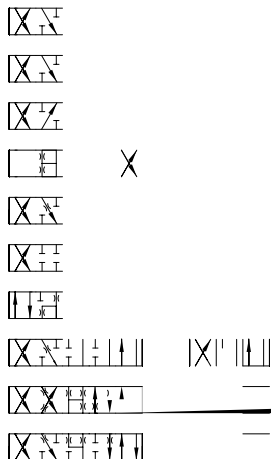
Function and configuration	02
Ordering code	02
Symbols	03
Technical data	03
Operating limitation	04
Characteristic curves	04
Unit dimensions	05

Features

- Direct operated directional spool valves with mechanical, manual operation
- Roller plunger
- 19 versions of spools, optional

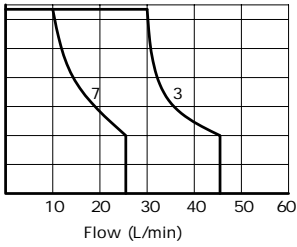
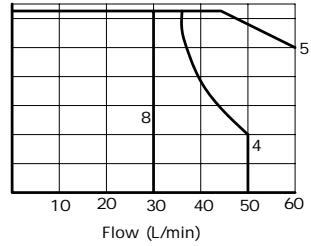
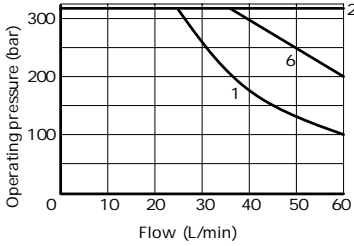


Symbols



02

Technical data



$\Delta P / Q$ -Characteristic curve

