

GWE

(1)	1	2	(2)	(3)	1	2	(4)
(3)		(4)		()		(3)

(2)

(2)	(5)	(3)	P	A	B
-----	-----	-----	---	---	---

T P B A T

(2)	(3)	(4)
-----	-----	-----

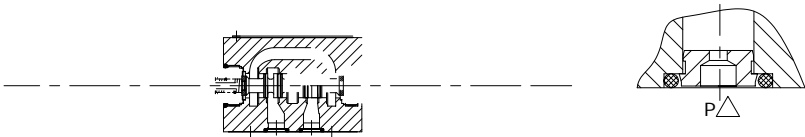
G4WE6...L6X/OB2...(A C D)

2	2
---	---

G4WE6...L6X/OFB2.. (A C D)

2	2	1
---	---	---

P

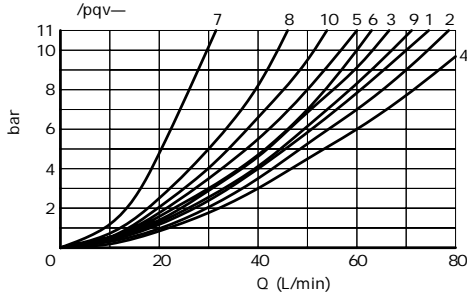


		-30	+50
		-20	+50
		kg	2.6
		kg	4.3
		P A B	bar
			350
		T	bar
			210
		A B	T
		L/min	80
()	Q	mm ²	6%
	W	mm ²	3%
		-	
		-	
		-30	+80
		-20	+80
		mm ² /s	2.8 500
			NAS1638 9 ISO4406 20/18/15

		V	12 24 36 110
		%	-15 +10
		W	30
ISO 6403	ON	ms	25 45
	OFF	ms	10 25
		/h	15000
			+150

PE $\frac{1}{2}$

(HLP46 =40 ± 5)

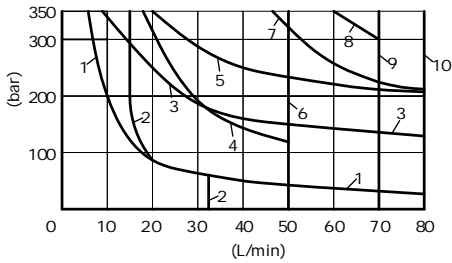


- 7 " R" B A
- 8 " G" " T" P T
- 9 " H" P T

	P	A	P	B	A	T	B	T
AB	3	3	-	-	-	-	-	-
C	1	1	3	1	3	1	1	1
DY	5	5	3	3	3	3	3	3
E	3	3	1	1	1	1	1	1
F	1	3	1	1	1	1	1	1
T	10	10	9	9	9	9	9	9
H	2	4	2	2	2	2	2	2
JQ	1	1	2	1	2	1	2	1
L	3	3	4	9	4	9	4	9
M	2	4	3	3	3	3	3	3
P	3	1	1	1	1	1	1	1
R	5	5	4	-	4	-	4	-
V	1	2	1	1	1	1	1	1
W	1	1	2	2	2	2	2	2
U	3	3	9	4	9	4	9	4
G	6	6	9	9	9	9	9	9

(HLP46 =40 ± 5)

P A B B T P A
10 T



1	A B ₁₎
2	V
3	A B
4	F P
5	J
6	G H T
7	A/O A/OF L U
8	C D Y
9	M
10	E R ₂₎ C/O C/OF D/O D/OF Q W

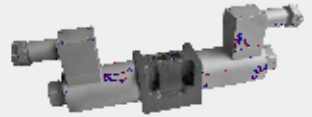
1)



217

G...WE10...L3X 型

(NG) 10
315 bar
120L/min



目录

02
03
03
04
04
05
05
06

特点

-
- DIN24 340A
- ISO 4401 CETOP-RP 121H
-
- 90°
-

GWE

	(1)		(2)	(3)	(4)
	(3)	(4)		()	(3)

(2)

	(2)	(5)	(3)		P A B
--	-----	-----	-----	--	-------

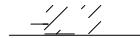
T P B A T

(2)	(3)	(4)
-----	-----	-----

GWE10.L3X/OB2..(A C D)

GWE10.L3X/OFB2..(A C D)

P

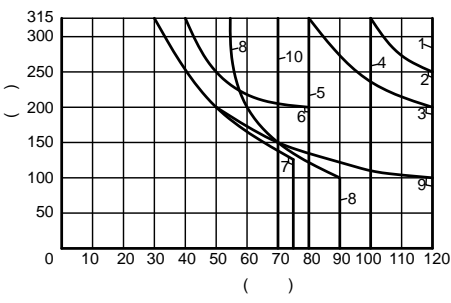
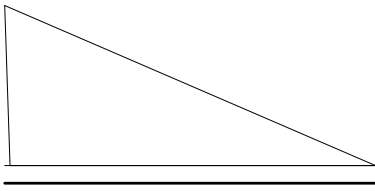




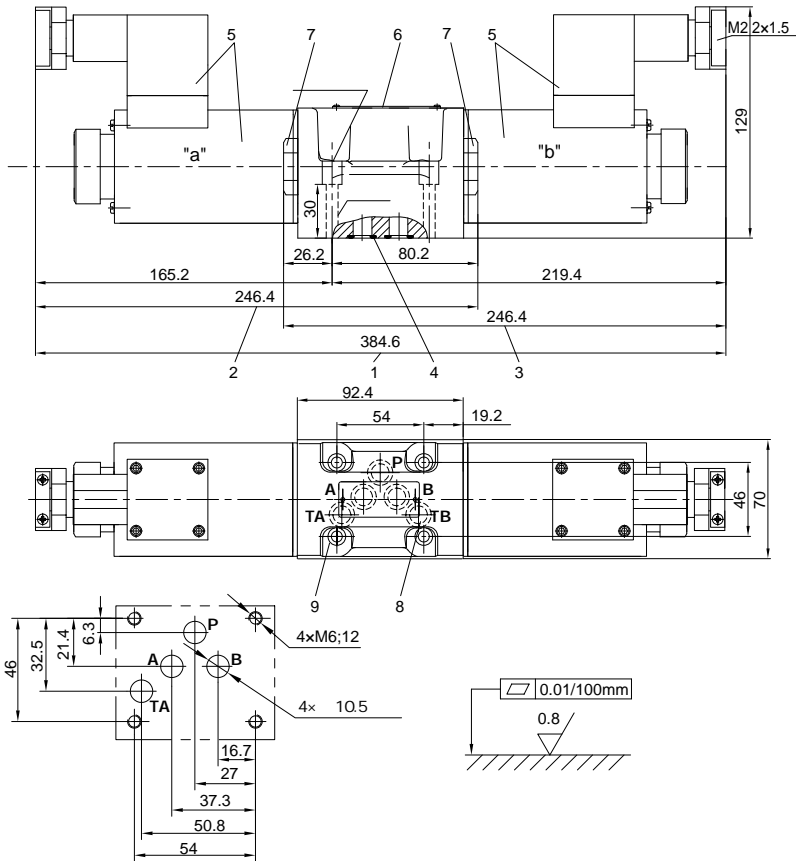
			-30 +50
			-20 +50
		kg	5.9
		kg	8.9
		P A B bar	315
		T bar	210
			A B T
		L/min	120
()	V	mm ²	11(A/B T); 10.3(P A/B)
	W	mm ²	2.5(A/B T)
	Q	mm ²	5.5(A/B T)
			-
			-
			-30 +80()
			-20 +80()
		mm ² /s	2.8 500
			NAS1638 9 ISO4406 20/18/15

		V	12 24 36 110
		%	-15 +10
		W	35
ISO 6403		ms	45 60
		ms	20 30
		/h	15000
DIN 40050			IP65
			+150

PE ⊥



(mm)



1

2

3

4 R

13x 1.6x 2

O 12x 2

5

6

7

1

8

A

B

TB

9

M6x 40GB/T70.1-10.9

 $M_h=15.5N\text{m}$

G66/01(G3/8) G66/02(M18x 1.5)

G67/01(G1/2) G67/02(M22x 1.5)

G534/01(G3/4) G534/02(M27x 2)