

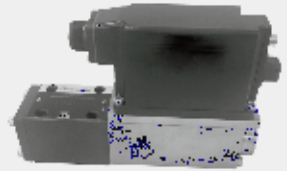


6.15

4WRPEH6...L2X

6

315 bar
40L /min



(OBE)

- 02
- 03
- 03
- 04
- 05
- 06-07
- 08-09
- 10

6P+PE

F1 4...20mA $R_{sh}=200$

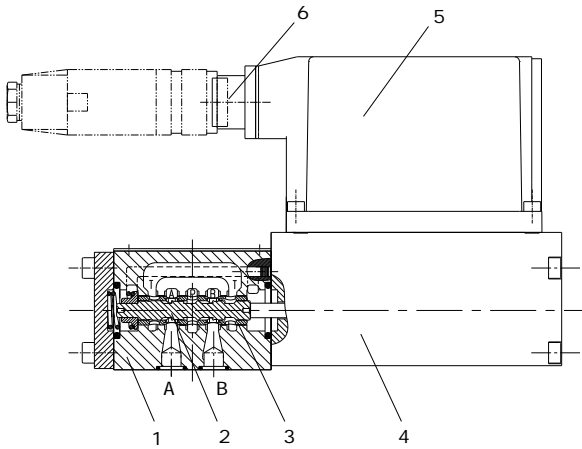
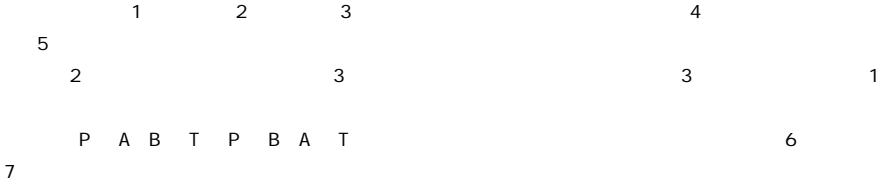
ISO 4401-03-02

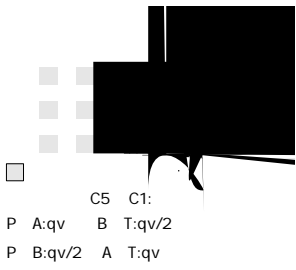
OBE

A1 ± 10V

4WRPEH6...-L2X/G24KO/...

LVDT

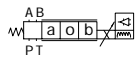




C5 C1:

P A:qv B T:qv/2

P B:qv/2 A T:qv



		OBE				
		6 ISO 4401-03-02-0-05				
		-20...+50				
		Kg	~2.75			
()		25g 3			(24h)	
(p=100bar HLP46 = 40 ± 5)						
		DIN 51 524				
		mm ² /s	20...100			
		mm ² /s	10...800			
		-20 +70				
ISO 4406 (c)		18/16/13 ¹				
(p = 35 bar)		L/min	2	4	12	24 40
		bar	A B P 315			
		bar	T 250			
100bar		cm ³ /min	150	180	300	500 900
		cm ³ /min				300 450
/						
		%	0.2			
0...100%		ms	10			
		T = 40 < 1%				
		± 1%				

		%	100ED			
		IP65()				
		6P+PE DIN 43563				
A			24VDC _{nom}			
	B			21 VDC/ 40VDC		
		0V (2)				
		A _F	2.5			
"A1"		Ri = 100k				
D (U _E)			0...± 10V			
E			0V			
"F1"		R _{sh} = 200				
D (I _{D,E})			4...12...20mA			
E (I _{D,E})			I _{D,E}			
"A1"		LVDT				
F (U)			0...± 10V			
C			0V			
"F1"		LVDT 4 ... (12) ... 20mA				
F (I _{F,C})			200 ... 500			
C (I _{F,C})			4... (12) ... 20mA ()			
		I _{F,C}				

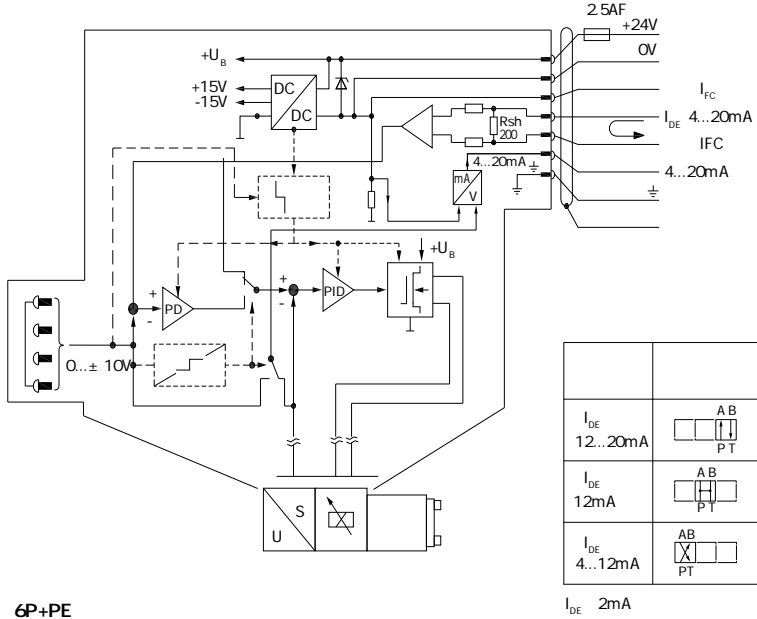
-
- VDE0295 6 : 24V DC_{nom}
- /
- 18V DC

-
Ø - 0.75 mm² 20m
- 1.0 mm² 40m

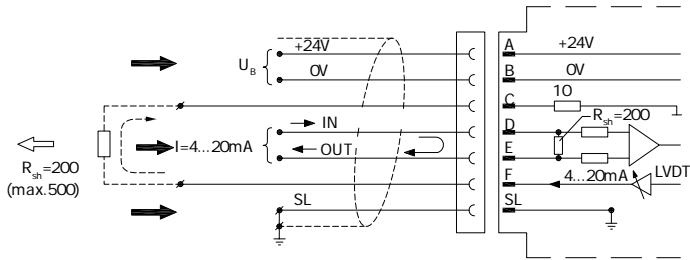
Ø - 9.4...11.8mm
- 12.7...13.5mm

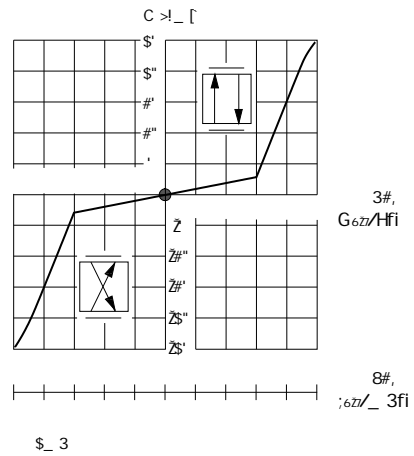
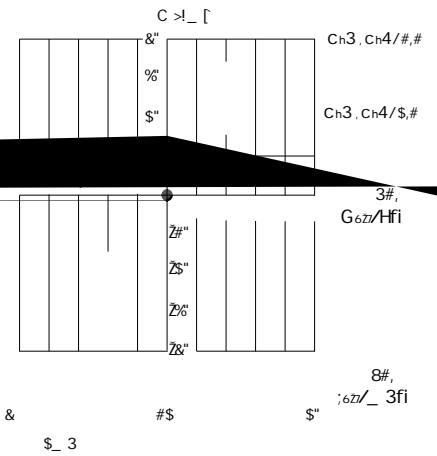
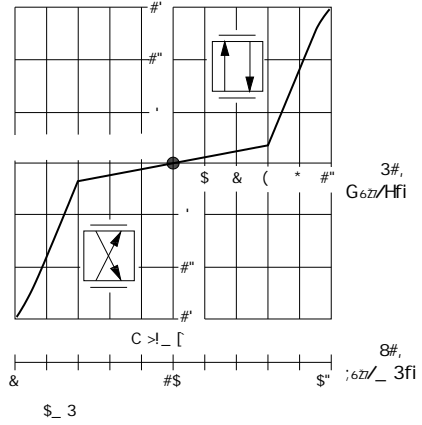
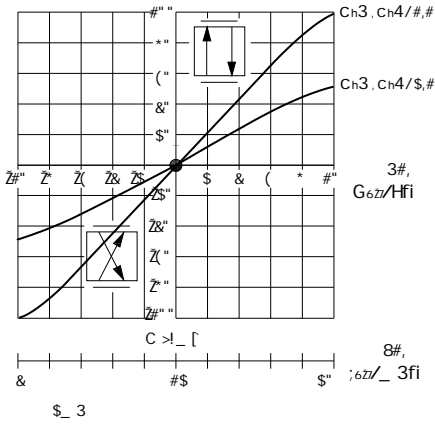
(OBE)

F1 I_{D-E} 4...20mA

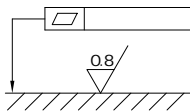
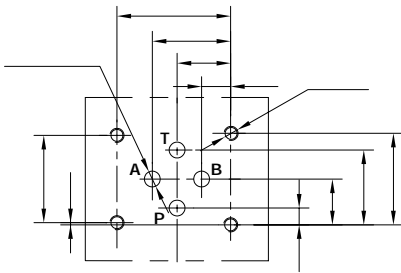
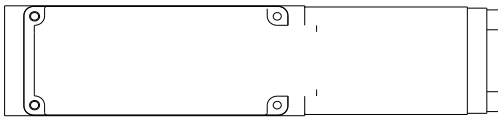
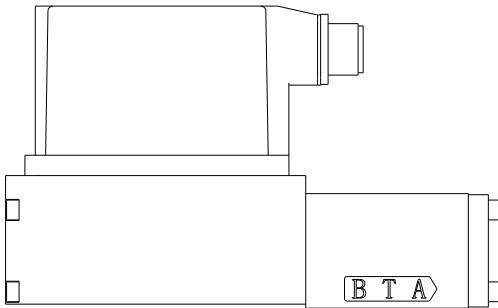


6P+PE
F1 I_{D-E} 4...20mA ($R_{sh} = 200$)





(mm)

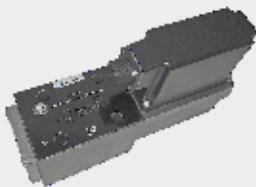




6.16

4WRPEH10...L2X

10
315 bar
100L/min



02
03
03
04
05
06-07
08-09
10

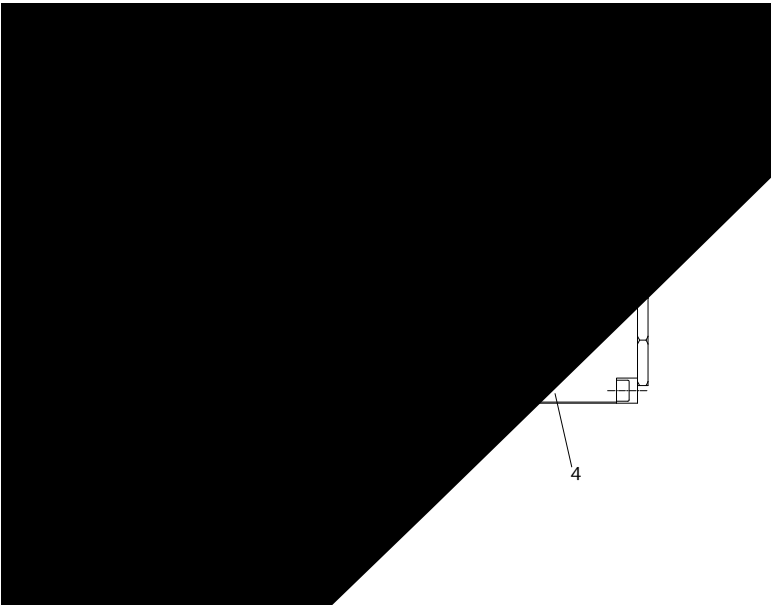
OBE

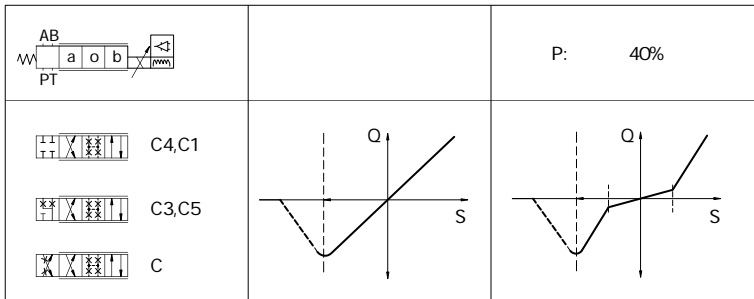
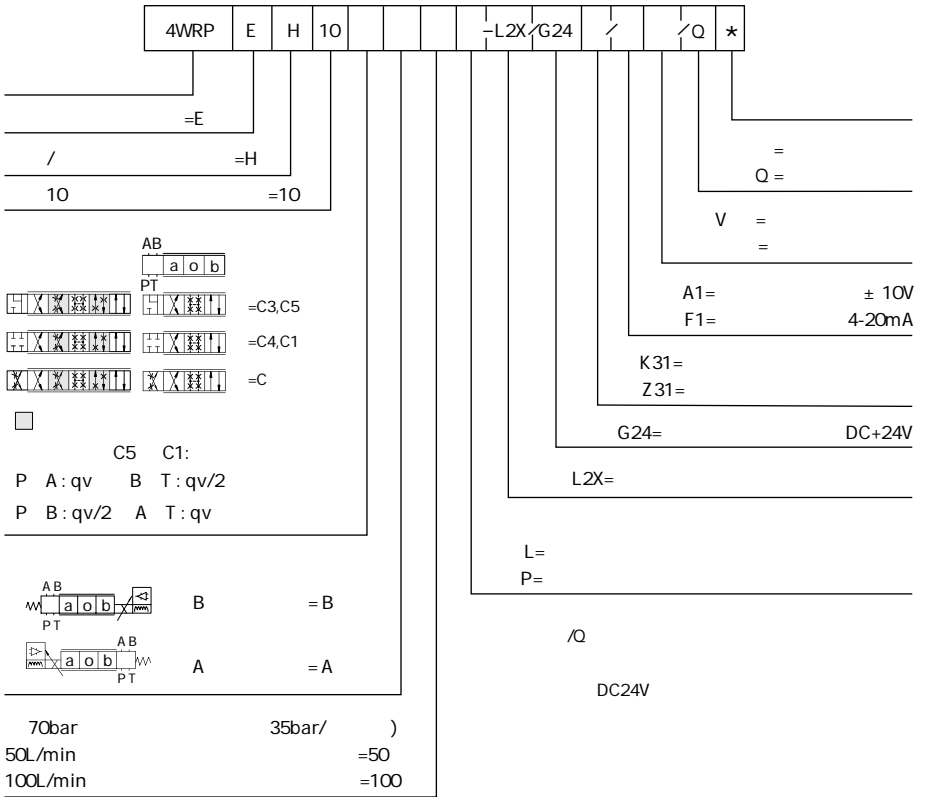
6P+PE
A1 ± 10V F14...20mA R_{sh}=200
ISO 4401-05-04

4WRPEH10...-L2X/G24KO/...

LVDT

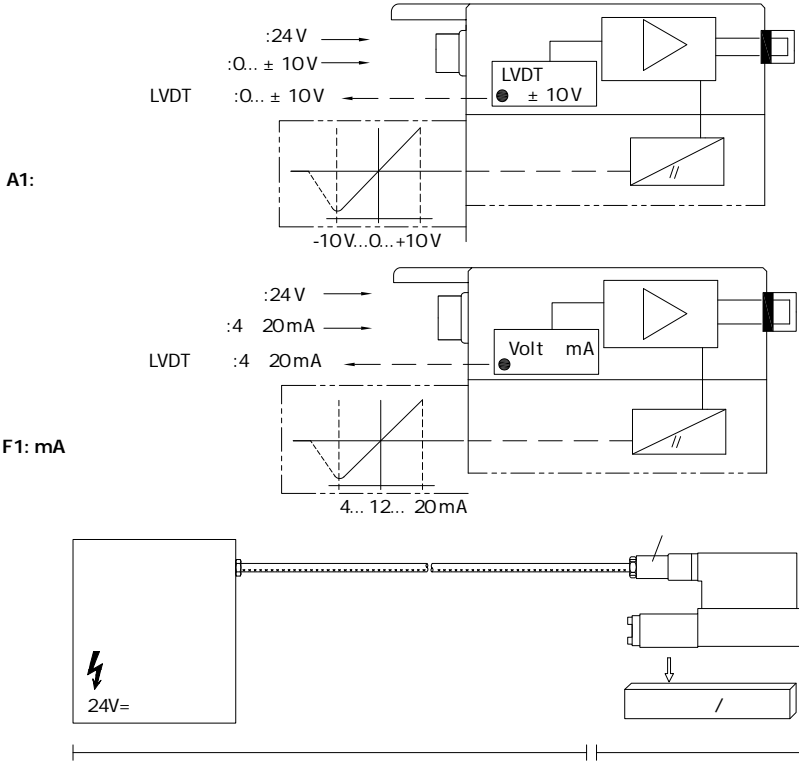
1 2 3 4 (5)
2 3 3 1
P A B T P B A T 6
7





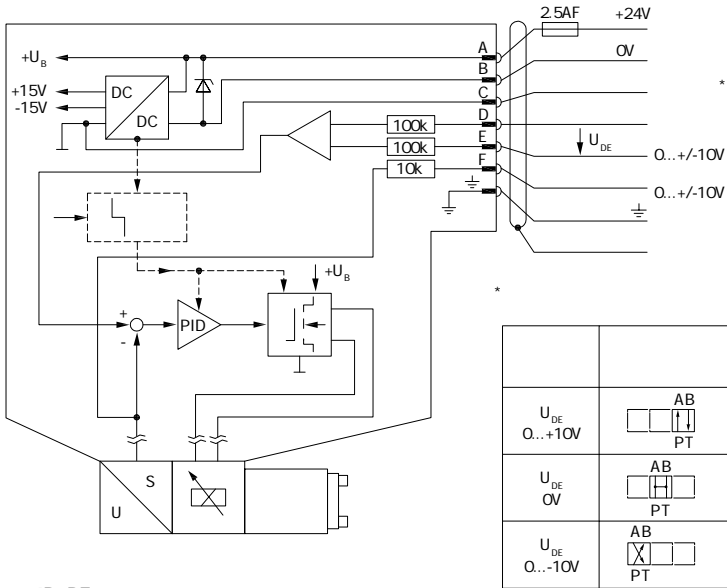
		OBE	
		10 (ISO 4401-05-04-0-05)	
		-20...+50	
		Kg	7.1
		25g	3 (24h)
(HLP 46 = 40 ± 5)			
		DIN 51524...535	
		mm ² /s	20...100
		mm ² /s	10...800
		-20 +70	
ISO 4406 (c) 18/16/13			
(p = 35 bar per edge)		L/min	50 100
		bar	P A B 315
		bar	T 250
100bar		cm ³ /min	<1200 <1500
		cm ³ /min	<600 <600
/			
		%	0.2
0... 100%		ms	25
		T = 40 < 1%	
		± 1%	

		%	100ED
		IP65()	
		6P+PE DIN 43563	
A B OV			24VDC _{nom}
			21VDC / 40VDC
			2VDC
		A _F	2.5
"A1"		R _I = 100k	
D (U _E)		0...± 10V	
E		0V	
"F1"		R _{sh} = 200	
D (I _{D,E})		4...12...20mA	
E (I _{D,E})		I _{D,E}	
"A1"		LVDT	
F (U)		0...± 10V	
C		0V	
"F1"		LVDT	
F (I _{F,C})		4...20mA	
C (I _{F,C})		I _{F,C}	



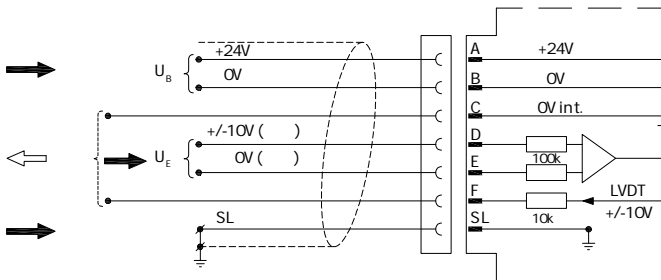
:	-		24V DCnom
-	-	VDE 0295 6	
-	/		18V DC
-	-		" "
-	-		" F1"
			I _{D,E} 3mA
			I _{D,E} 2mA
	-0.75mm ²	20m	
	-1.0mm ²	40m	
	-9.4...11.8mm		
	-12.7...13.5mm		
			" "
			" EN 982

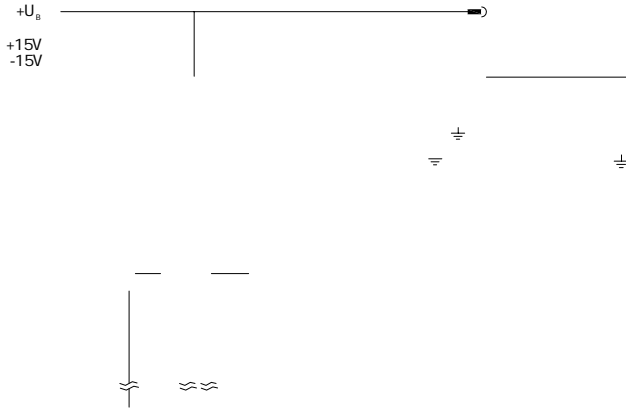
A1 $U_{D-E} 0 \dots \pm 10V$



6P+PE

A1 $U_{D-E} 0 \dots \pm 10V$





HLP46 =40 ± 5

